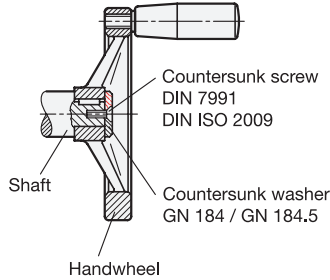
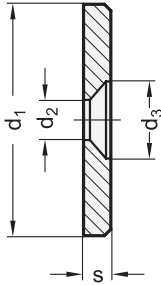


Example of application:
Fixing
of a handwheel
with keyway
on the shaft



ROSTFREI
Inox
Stainless
Steel

1

| d ₁ | d ₂ | d ₃ | s | for countersunk screws DIN 7991 / DIN ISO 2009 |
|----------------|----------------|----------------|-----|--|
| 16 | 4,3 | 8 | 3 | M 4 |
| 20 | 4,3 | 8 | 3 | M 4 |
| 22 | 5,3 | 10 | 3,5 | M 5 |
| 25 | 5,3 | 10 | 3,5 | M 5 |
| 28 | 5,3 | 10 | 3,5 | M 5 |
| 32 | 6,4 | 12 | 4 | M 6 |
| 36 | 6,4 | 12 | 4 | M 6 |
| 40 | 6,4 | 12 | 5 | M 6 |
| 45 | 6,4 | 12 | 6 | M 6 |
| 52 | 6,4 | 12 | 6 | M 6 |

Specification

- **GN 184**
Steel
- turned
- blackened
- **GN 184.5**
Stainless Steel AISI 303
- turned
- matt shot-blasted
- *Stainless Steel characteristics → Page 1489*
- **RoHS compliant**

Information

Countersunk washers GN 184 / GN 184.5 are retained to the face of the shaft end with a countersunk head screw DIN ISO 2009 or DIN 7991 forming a clean-look end cap.

A typical application is the retention of handwheels with hub keyed to the shaft.

How to order (Steel)

GN 184-28

1 d₁

How to order (Stainless Steel)

GN 184.5-36

1 d₁