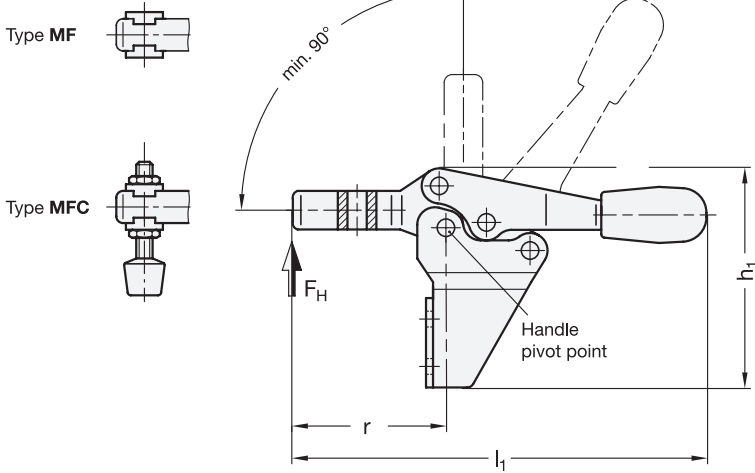


# GN 820.2

Steel / Stainless Steel

## Horizontal acting toggle clamps

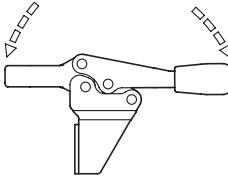
with vertical mounting base



ROSTFREI Rost frei  
Inox  
Stainless  
Steel

- 2 Type**
- MF** U-bar version, with two flanged washers
  - MFC** U-bar version, with two flanged washers and GN 708.1 Spindle Assembly

Operating principle



Size	Steel	Stainless Steel	$F_H$ in N	Holding capacity	$a \approx$	$b_1$	$b_2$	$b_3$	$d_1$	$d_2$	$h_1$	$h_2$	$h_3$	$h_4$	$h_5$ max.
75	75	75	900	20	30	25,5	5,5	M 5	5	4,5	62	39	11	19	30
130	130	130	1000	32	39	35	6,5	M 6	6	5,5	85	58,5	16	25,5	48,5
230	230	230	1700	37	43	40	8,5	M 8	8	6,5	102	69	18	30	53
355	-	-	1800	58	52	52	10,5	M 10	10	8,5	135	92	22	37	75,5

Size	Steel	Stainless Steel	$l_1$	$l_2$	$l_3$	$l_4$	$m_1$	$m_2$	$m_3$	$r$	$s$	$w$ Adjustable range
75	75	75	118	30	72	45	18	13,5	6	42,5	2	15
130	130	130	170	45	95	55	26	22	6,5	61	2,5	17,5
230	230	230	195	52	113	68	28,5	24	8	70	3	20
355	-	-	270	85	166	77	32	32	10	108,5	3,5	19