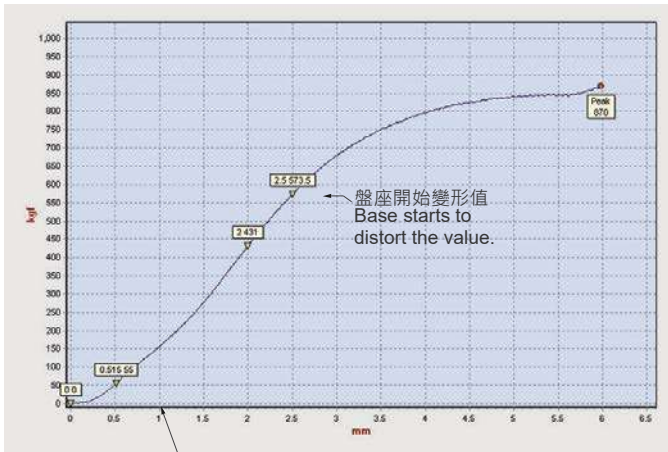
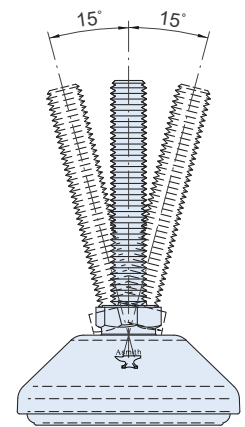
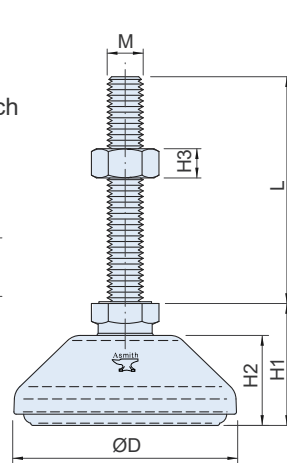
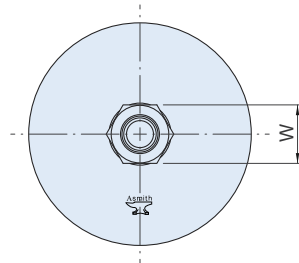
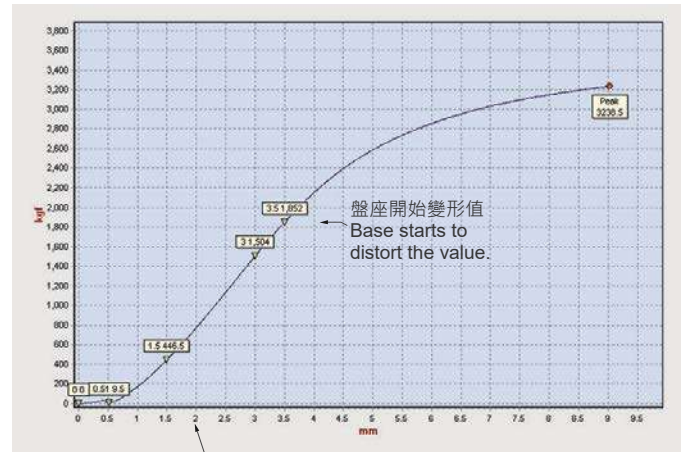




單支荷重100~800Kgf
Load Capacity 100~800Kgf / each



設定荷重 150 kgf 下壓值 1 mm · Ø50 圓腳座荷重測試曲線圖 (不含盤墊)
Suppose the leveling feet was pressuring under load capacity 150 kgf per 1 mm. The chart show the leveling feet load capacity of bolt and base dimension Ø50 mm.



設定荷重 800 kgf 下壓值 2 mm · Ø80 圓腳座荷重測試曲線圖 (不含盤墊)
Suppose the leveling feet was pressuring under load capacity 800 kgf per 2 mm. The chart show the leveling feet load capacity of bolt and base dimension Ø80 mm.

材質與表面處理

- 盤座：尼龍(PA66+GF) · 黑色。
- 螺桿：DK-04 合金鋼(SCM) · 鍍鋅。
DS-04 不銹鋼(SUS304)。
- 盤墊：橡膠(NBR) · 耐油、耐鹼、耐熱130°C。

特徵

- 機械安裝時 · 地面傾斜自動導正水平。
- 鬆緊度適中。
- 防震、防銹(DS系列)、耐鹼、防滑、耐磨耗、耐油。

MATERIAL AND FINISH

- Base: Nylon(PA66+GF), Black.
- Cushion: Rubber (NBR), Resistance to Greasiness, Alkali, Heat 130°C.
- Bolt: DK-04: Steel (SCM), Zinc plated.
DS-04: Stainless steel (SUS304).

FEATURES

- The rake of bolt's bottom and base's hole design is to prevent vibration while they are assembled.
- The loose allowance is moderate.
- Resistance to conductance rust (DS Series), shock, alkali, slip, abrasion and greasiness.

SPECIFICATIONS:

Unit:mm

產品編號 Item No.		尺寸 Dimensions							荷重 Load Capacity (kgf)	重量 Weight(g)	
螺桿 Bolt (SCM)	螺桿 Bolt (SUS304)	M	L	ØD	H1	H2	H3	W		SCM	SUS304
DK-0408035C	DS-0408035C	M8*P1.25	35	50	28	20	6.5	13	100	57	60
DK-0408050C	DS-0408050C		50							59	67
DK-0408075C	DS-0408075C		75							71	75
DK-0410050C	DS-0410050C	M10*P1.5	50	50	30	20	8	17	150	83	88
DK-0410075C	DS-0410075C		75							95	101
DK-0410100C	DS-0410100C		100							111	114
DK-0412075F	DS-0412075F	M12*P1.75	75	65	41	28	10	19	400	180	179
DK-0412100F	DS-0412100F		100							201	197
DK-0412150F	DS-0412150F		150							234	234
DK-0416075F		M16*P2.0	75	65	44	28	13	24	500	258	
DK-0416100F	DS-0416100F		100							294	294
DK-0416150F	DS-0416150F		150							364	367
DK-0416100J	DS-0416100J	M20*P2.5	100	80	50	13	24	700		384	385
DK-0416150J	DS-0416150J		150							446	450
DK-0420100J	DS-0420100J		100							510	509
DK-0420150J	DS-0420150J	M20*P2.5	150	52	16	30	800		612	619	
DK-0420200J			200						712		