

BASE

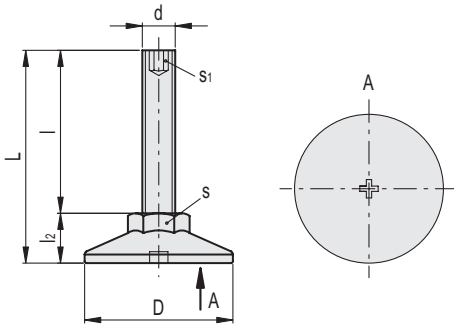
Polyamide based (PA) technopolymer with adjusting hexagon, black colour, matte finish.

STANDARD EXECUTION

Zinc-plated steel threaded stem with hexagon socket at the upper end. Base with screwdriver cross slot.

TECHNICAL DATA

It's the user's responsibility to determine whether the product is suitable for the intended purpose according to the actual conditions of use.



Code	Description	D	d	L	l	l2	s	s1	Max. limit static load* [N]	⚖️
431201	LX.25-SW13-M6x22-HS	25	M6	33	22	11	13	3	1500	8
431203	LX.25-SW13-M6x32-HS	25	M6	43	32	11	13	3	1500	10
431205	LX.25-SW13-M6x52-HS	25	M6	63	52	11	13	3	1500	14
431207	LX.25-SW13-M6x62-HS	25	M6	73	62	11	13	3	1500	16
431211	LX.25-SW13-M8x17-HS	25	M8	28	17	11	13	4	2500	10
431213	LX.25-SW13-M8x22-HS	25	M8	33	22	11	13	4	2500	12
431215	LX.25-SW13-M8x32-HS	25	M8	43	32	11	13	4	2500	14
431217	LX.25-SW13-M8x52-HS	25	M8	63	52	11	13	4	2500	18
431219	LX.25-SW13-M8x72-HS	25	M8	83	72	11	17	4	2500	22
431241	LX.30-SW17-M6x21-HS	30	M6	33	21	12	17	3	1500	14
431243	LX.30-SW17-M6x31-HS	30	M6	43	31	12	17	3	1500	16
431245	LX.30-SW17-M6x51-HS	30	M6	63	51	12	17	3	1500	20
431251	LX.30-SW17-M8x16-HS	30	M8	28	16	12	17	4	2500	17
431253	LX.30-SW17-M8x21-HS	30	M8	33	21	12	17	4	2500	18
431255	LX.30-SW17-M8x31-HS	30	M8	43	31	12	17	4	2500	20
431257	LX.30-SW17-M8x51-HS	30	M8	63	51	12	17	4	2500	24
431259	LX.30-SW17-M8x71-HS	30	M8	83	71	12	17	4	2500	28
431271	LX.30-SW17-M10x16-HS	30	M10	28	16	12	17	5	3000	21
431273	LX.30-SW17-M10x21-HS	30	M10	33	21	12	17	5	3000	22
431275	LX.30-SW17-M10x31-HS	30	M10	43	31	12	17	5	3000	24
431277	LX.30-SW17-M10x41-HS	30	M10	53	41	12	17	5	3000	26
431279	LX.30-SW17-M10x51-HS	30	M10	63	51	12	17	5	3000	28
431281	LX.30-SW17-M10x61-HS	30	M10	73	61	12	17	5	3000	30
431283	LX.30-SW17-M10x71-HS	30	M10	83	71	12	17	5	3000	32

* The max static load is the value above which the load applied to the element may cause some plastic material breakage, in particular conditions of use. Obviously, a factor that takes into consideration the importance and the safety level of the specific application must be applied to this value.

