



MATERIAL

Glass-fibre reinforced polyamide based (PA) technopolymer, grey-black colour, matte finish.

SCREW-COVERS

Technopolymer in Ergostyle colours, glossy finish. Supplied with the handle, press-fit assembly, removable by a screwdriver.

Available also as accessories sold separately (see table ECA.).

Code	Description
29865-*	ECA.P5-*

* Complete with colour index (C1, ..., C17).

STANDARD EXECUTIONS

- **EWP-EH**: pass-through holes for cylindrical-head screws with hexagon socket, hexagonal-head screws or standard lock nuts.
- **EWP-SH**: pass-through holes for countersunk head screws.

FEATURES AND APPLICATIONS

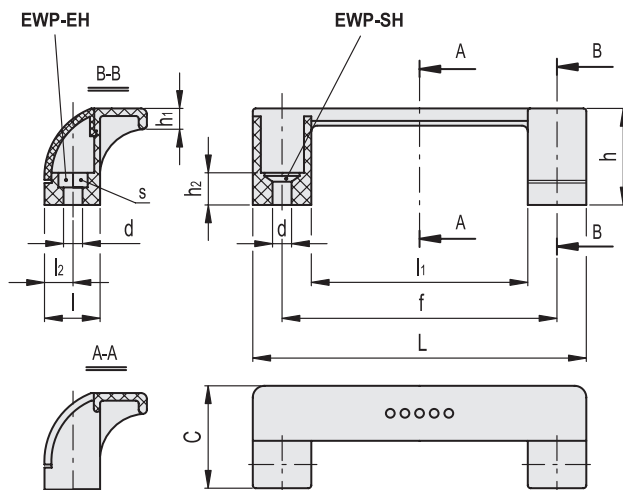
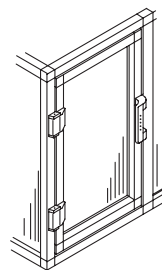
EWP handles have been especially designed to fit machine guards or automation systems with single-leaf door. The coloured caps improve the visibility of the handle and offer the possibility of product customisation.

TECHNICAL DATA

Tensile stress: F1 value reported in the table is the result of breaking tests carried out with an appropriate dynamometric equipment under the test conditions shown in the figure with ambient temperature. Maximum tightening torque for screw assembly 3 Nm.



ERGOSTYLE® ELESA Original design



* Complete with colour index, example: 265211-C2 EWP.110-EH-C2

 C1	 C2	 C3	 C4	 C5	 C6	 C17
RAL7021	RAL2004	RAL7035	RAL1021	RAL5024	RAL3000	RAL6017

Code	Description	L	f±0.5	d	s	h	h1	h2	C	l	l1	l2	F1 [N]	⚖
265211-*	EWP.110-EH-*	114	93.5	6.5	10	33	7	11	35	19	74	9.5	900	26
265251-*	EWP.110-SH-*	114	93.5	6.5	-	33	7	11	35	19	74	9.5	900	26