

Shoulder screws similar to ISO 7379

Item description/product images



Description

Material:

Steel or stainless steel A2.

Version:

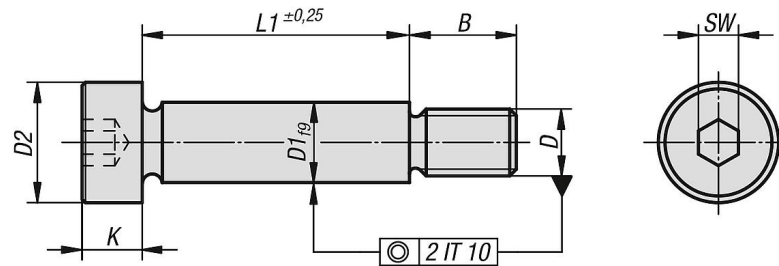
Grade 12.9. Shaft OD ground and bright.

Bright stainless steel or tempered steel.

Note:

Hexagon socket head shoulder screws are precision construction elements for many applications. As they can simplify complicated constructions, they are frequently chosen as the most cost-effective solution. Shoulder screws provide the decisive rationalising effect required today.

Drawings



Overview of items

Shoulder screws similar to ISO 7379

| Order No. | Main material | D1 | D | D2 | B | K | SW | L1 |
|-------------|---------------|----|----|----|-----|-----|-----|----|
| K0705.04X06 | steel | 4 | M3 | 7 | 7 | 3 | 2 | 6 |
| K0705.04X08 | steel | 4 | M3 | 7 | 7 | 3 | 2 | 8 |
| K0705.04X10 | steel | 4 | M3 | 7 | 7 | 3 | 2 | 10 |
| K0705.04X12 | steel | 4 | M3 | 7 | 7 | 3 | 2 | 12 |
| K0705.04X16 | steel | 4 | M3 | 7 | 7 | 3 | 2 | 16 |
| K0705.04X20 | steel | 4 | M3 | 7 | 7 | 3 | 2 | 20 |
| K0705.04X04 | steel | 4 | M3 | 7 | 7 | 3 | 2 | 4 |
| K0705.04X05 | steel | 4 | M3 | 7 | 7 | 3 | 2 | 5 |
| K0705.04X25 | steel | 4 | M3 | 7 | 7 | 3 | 2 | 25 |
| K0705.04X30 | steel | 4 | M3 | 7 | 7 | 3 | 2 | 30 |
| K0705.05X16 | steel | 5 | M4 | 9 | 8 | 4 | 2,5 | 16 |
| K0705.05X20 | steel | 5 | M4 | 9 | 8 | 4 | 2,5 | 20 |
| K0705.05X08 | steel | 5 | M4 | 9 | 8 | 4 | 2,5 | 8 |
| K0705.05X10 | steel | 5 | M4 | 9 | 8 | 4 | 2,5 | 10 |
| K0705.05X30 | steel | 5 | M4 | 9 | 8 | 4 | 2,5 | 30 |
| K0705.05X40 | steel | 5 | M4 | 9 | 8 | 4 | 2,5 | 40 |
| K0705.05X05 | steel | 5 | M4 | 9 | 8 | 4 | 2,5 | 5 |
| K0705.05X06 | steel | 5 | M4 | 9 | 8 | 4 | 2,5 | 6 |
| K0705.05X12 | steel | 5 | M4 | 9 | 8 | 4 | 2,5 | 12 |
| K0705.05X25 | steel | 5 | M4 | 9 | 8 | 4 | 2,5 | 25 |
| K0705.06X10 | steel | 6 | M5 | 10 | 9,5 | 4,5 | 3 | 10 |
| K0705.06X16 | steel | 6 | M5 | 10 | 9,5 | 4,5 | 3 | 16 |
| K0705.06X20 | steel | 6 | M5 | 10 | 9,5 | 4,5 | 3 | 20 |