

Eye bolts DIN 444, Form B with long thread

Item description/product images



Description

Material:

Steel or 1.4305 stainless steel

Version:

Steel grade 8.8, black oxidised.

Stainless steel bright.

Note:

Eye bolts, threaded up to the eye.

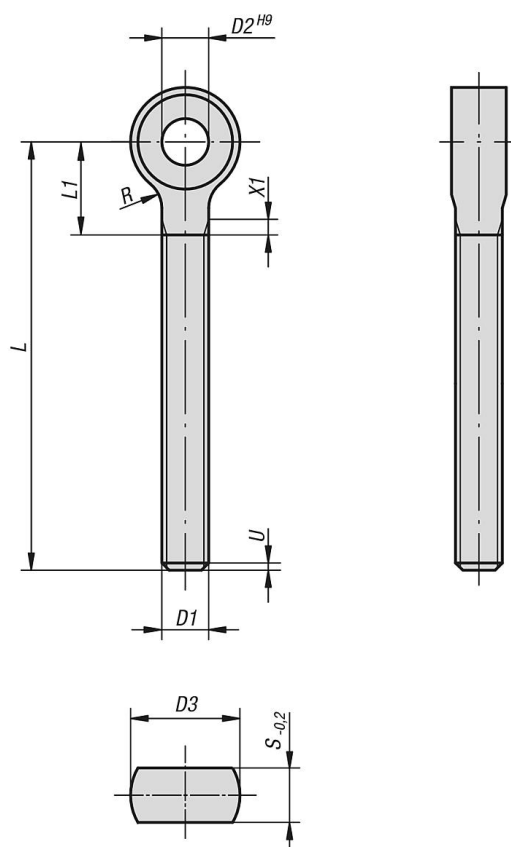
See K0007 for suitable hinge pins.

Drawing reference:

U = max. 2 P (incomplete thread)

X1 = to DIN 76 part 1

Drawings



Overview of items

Eye bolts DIN 444, Form B with long thread

Order No.	Main material	D1	D2	D3	L	L1 max.	R	S
K1418.0650	steel	M6	6	14	50	14	4	7
K1418.0660	steel	M6	6	14	60	14	4	7