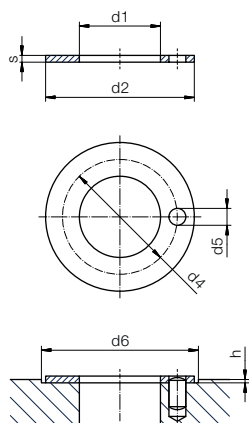


Thrust Washer (Form T)



Order key

Type Dimensions [mm]

W T M -05 09 -006

iglidur® material	Form T	Metric	Inner-Ø d1	Outer-Ø d2	Thickness s
-------------------	--------	--------	------------	------------	-------------



Dimensions according to ISO 3547-1 and special dimensions



Imperial dimensions available
▶ From page 1446

Dimensions [mm]

d1	d2	s	d4	d5	h	d6	Part No.
+0.25	-0.25	-0.05	-0.12 +0.12	+0.375 +0.125	+0.2 -0.2	+0.12	
5.0	9.5	0.6	⁴⁾	⁴⁾	0.3	9.5	WTM-0509-006
6.0	20.0	1.5	13.0	1.5	1.0	20.0	WTM-0620-015
8.0	18.0	1.5	13.0	1.5	1.0	18.0	WTM-0818-015
10.0	18.0	1.0	⁴⁾	⁴⁾	0.7	18.0	WTM-1018-010
10.0	18.0	1.5	⁴⁾	⁴⁾	1.0	18.0	WTM-1018-015
12.0	24.0	1.5	18.0	1.5	1.0	24.0	WTM-1224-015
14.0	26.0	1.5	20.0	2.0	1.0	26.0	WTM-1426-015
15.0	24.0	1.5	19.5	1.5	1.0	24.0	WTM-1524-015
16.0	30.0	1.5	23.0	2.0	1.0	30.0	WTM-1630-015
18.0	32.0	1.5	25.0	2.0	1.0	32.0	WTM-1832-015
18.0	44.0	1.5	30.0	7.0	1.0	44.0	WTM-1844-015
20.0	36.0	1.5	28.0	3.0	1.0	36.0	WTM-2036-015
22.0	38.0	1.5	30.0	3.0	1.0	38.0	WTM-2238-015
24.0	42.0	1.5	33.0	3.0	1.0	42.0	WTM-2442-015
26.0	44.0	1.5	35.0	3.0	1.0	44.0	WTM-2644-015
28.0	40.0	1.5	38.0	4.0	1.0	48.0	WTM-2840-015
28.0	48.0	1.5	38.0	4.0	1.0	48.0	WTM-2848-015
32.0	54.0	1.5	43.0	4.0	1.0	54.0	WTM-3254-015
38.0	62.0	1.5	50.0	4.0	1.0	62.0	WTM-3862-015
42.0	66.0	1.5	54.0	4.0	1.0	66.0	WTM-4266-015
48.0	74.0	2.0	61.0	4.0	1.5	74.0	WTM-4874-020
52.0	78.0	2.0	65.0	4.0	1.5	78.0	WTM-5278-020
62.0	90.0	2.0	76.0	4.0	1.5	90.0	WTM-6290-020
82.0	110.0	2.0	⁴⁾	⁴⁾	1.5	110.0	WTM-82110-020
102.0	130.0	2.0	⁴⁾	⁴⁾	1.5	130.0	WTM-102130-020
120.0	150.0	2.0	⁴⁾	⁴⁾	1.5	150.0	WTM-120150-020

⁴⁾ Design without fixing bore