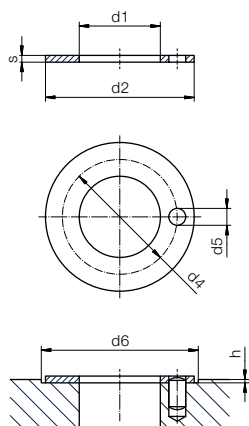


## Thrust Washer (Form T)



## Order key

Type

Dimensions [mm]

X T M-06 20-015

iglidur® material	Form T	Metric	Inner-Ø d1	Outer-Ø d2	Thickness s
-------------------	--------	--------	------------	------------	-------------



Dimensions according to ISO 3547-1  
and special dimensions



Imperial dimensions available

► From page 1446

## Dimensions [mm]

d1	d2	s	d4	d5	h	d6	Part No.
+0.25	-0.25	-0.05	-0.12 +0.12	+0.375 +0.125	+0.2 -0.2	+0.12	
6.0	20.0	1.5	13.0	1.5	1.0	20.0	XTM-0620-015
8.0	18.0	1.5	13.0	1.5	1.0	18.0	XTM-0818-015
8.0	29.0	1.5	<sup>4)</sup>	<sup>4)</sup>	1.0	29.0	XTM-0829-015
8.0	30.0	1.5	<sup>4)</sup>	<sup>4)</sup>	1.0	30.0	XTM-0830-015
10.0	18.0	1.0	<sup>4)</sup>	<sup>4)</sup>	0.7	18.0	XTM-1018-010
12.0	24.0	1.5	18.0	1.5	1.0	24.0	XTM-1224-015
14.0	26.0	1.5	20.0	2.0	1.0	26.0	XTM-1426-015
15.0	22.0	0.8	<sup>4)</sup>	<sup>4)</sup>	0.5	22.0	XTM-1522-008
15.0	24.0	1.5	19.5	1.5	1.0	24.0	XTM-1524-015
16.0	30.0	1.5	22.0	2.0	1.0	30.0	XTM-1630-015
18.0	32.0	1.5	25.0	2.0	1.0	32.0	XTM-1832-015
20.0	36.0	1.5	28.0	3.0	1.0	36.0	XTM-2036-015
22.0	38.0	1.5	30.0	3.0	1.0	38.0	XTM-2238-015
24.0	42.0	1.5	33.0	3.0	1.0	42.0	XTM-2442-015
26.0	44.0	1.5	35.0	3.0	1.0	44.0	XTM-2644-015
28.0	48.0	1.5	38.0	4.0	1.0	48.0	XTM-2848-015
32.0	54.0	1.5	43.0	4.0	1.0	54.0	XTM-3254-015
38.0	62.0	1.5	50.0	4.0	1.0	62.0	XTM-3862-015
42.0	66.0	1.5	54.0	4.0	1.0	66.0	XTM-4266-015
48.0	74.0	2.0	61.0	4.0	1.5	74.0	XTM-4874-020
52.0	78.0	2.0	65.0	4.0	1.5	78.0	XTM-5278-020
62.0	90.0	2.0	76.0	4.0	1.5	90.0	XTM-6290-020

<sup>4)</sup> Design without fixing bore



Even more dimensions from stock

More than 300 dimensions are now available. Search online for your required bearing.

► [www.igus.eu/iglidur-specialbearings](http://www.igus.eu/iglidur-specialbearings)