



FLCTEY12-XL

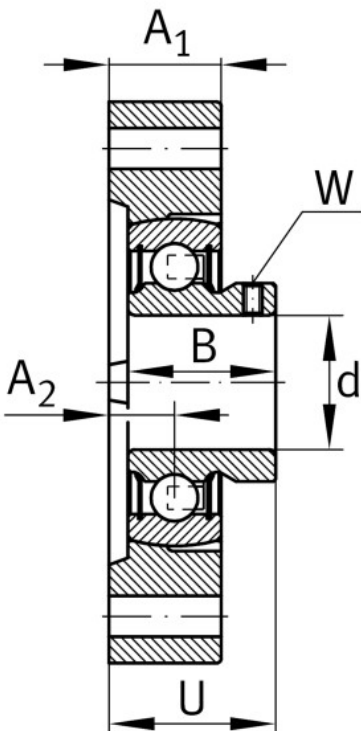
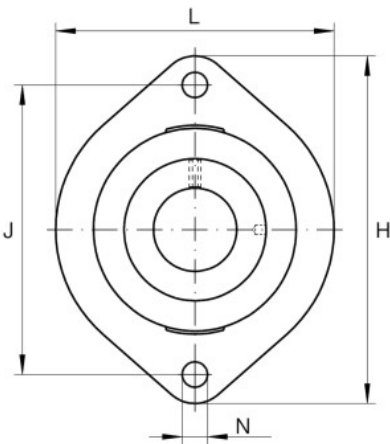
Flanged housing unit

Schaeffler ID:
0009256750000

Housing units FLCTEY, two-bolt flanged housing units, cast iron, grub screws in inner ring, P seals, without relubrication facility

X-life

Technical information



Main Dimensions & Performance Data

d	12 mm	Bore diameter
L	58.7 mm	Flange width
H	81 mm	Height flange
U	24.4 mm	Total height unit
C _r	9,800 N	Basic dynamic load rating, radial
C _{0r}	4,750 N	Basic static load rating, radial
C _{ur}	202 N	Fatigue load limit, radial
	0.28 kg	{Weight}

Mounting dimensions

J	63.5 mm	Distance fixing bore
J	63.5 mm	Pitch circle diameter (holes)
N	6.6 mm	Fixing bore
n	2	Number of screwing holes

Dimensions

A ₁	15 mm	Thickness of flange
A ₂	8.4 mm	Distance raceway
d ₃	28.4 mm	Outside diameter eccentric locking collar

Additional information

1	Number of housings
LCTE03	Housing
AY12-XL-NPP-B	Bearing designation

Temperature range

T _{min}	-20 °C	Operating temperature min.
T _{max}	120 °C	Operating temperature max.