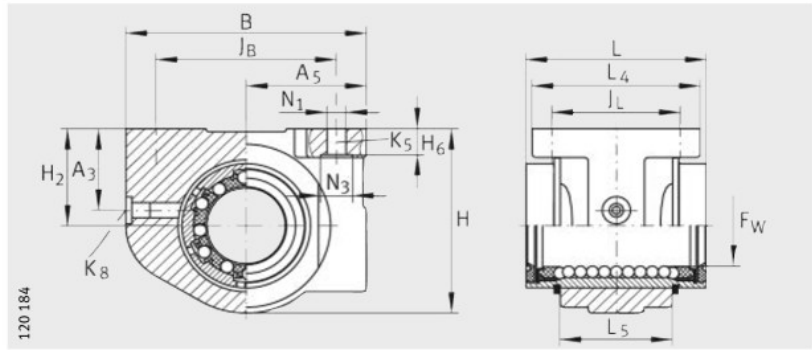


Machined range

Linear ball bearing and housing units

Closed, slotted or with segment cutout
Sealed

Greased,
with relubrication facility



KGBA..-PP-AS

Dimension table · Dimensions in mm

Designation			Mass m ≈g	Dimensions			Mounting dimensions					
				F _W	B	L h12	H	J _B	A ₅	B ₂ ⁴⁾	L ₄	
												Tolerances ⁷⁾
KGBA12-PP-AS	-	-	80	12	+0,008 0	42	32	34	32±0,15	21±0,01	-	32
-	KGBAS12-PP-AS	-						30,5			7,7	
-	-	KGBAO12-PP-AS						70				
KGBA16-PP-AS	-	-	120	16	+0,009 -0,001	50	36	41	40±0,15	25±0,01	-	35
-	KGBAS16-PP-AS	-						37			10,1	
-	-	KGBAO16-PP-AS						100				
KGBA20-PP-AS	-	-	200	20	+0,009 -0,001	60	45	47,5	45±0,15	30±0,01	-	42
-	KGBAS20-PP-AS	-						44,5			10	
-	-	KGBAO20-PP-AS						170				
KGBA25-PP-AS	-	-	410	25	+0,011 -0,001	74	58	60	60±0,2	37±0,01	-	54
-	KGBAS25-PP-AS	-						56			12,5	
-	-	KGBAO25-PP-AS						350				
KGBA30-PP-AS	-	-	610	30	+0,011 -0,001	84	68	67	68±0,2	42±0,01	-	60
-	KGBAS30-PP-AS	-						63,5			13,6	
-	-	KGBAO30-PP-AS						530				
KGBA40-PP-AS	-	-	1 200	40	+0,013 -0,002	108	80	87	86±0,2	54±0,015	-	78
-	KGBAS40-PP-AS	-						82,5			18,2	
-	-	KGBAO40-PP-AS						1 070				
KGBA50-PP-AS	-	-	1 880	50	+0,013 -0,002	130	100	98	108±0,2	65±0,015	-	70
-	KGBAS50-PP-AS	-						93			22,7	
-	-	KGBAO50-PP-AS						1 650				

1) Designs and dimensions, see page 31.

2) The basic load ratings are only valid for hardened (670 HV + 165 HV) and ground shaft raceways.

3) Basic load rating in main load direction.

4) Dimension B₂ on diameter F_W.

5) For fixing screws ISO 4762-8.8.

If there is a possibility of settling, the screws should be secured against rotation.

6) Note maximum tightening torques.

7) The tolerances are valid for KGBA..-PP-AS.

8) ① Main load direction