

**Ball Lock Pins • self-locking, with T-handle**

EH 22340. /EH 22350.

**Product Description**

For quick fastening, locking, adjusting, changing and securing. Quickly and easily unlockable for frequently repeated connections.

All versions are corrosion resistant. When using stainless steel 1.4542: high-strength, hardened, abrasion resistant pin with high load capacity.

Version with ergonomic grip.

**Material****Pin part**

- Stainless steel 1.4305
- Stainless steel 1.4542, precipitation-hardened

**Handle**

- Aluminium, black similar to RAL 9005

**Press button**

- Stainless steel, black

**Spring**

- stainless steel

**Operation**

The balls are unlocked by pressing the button.

**Characteristic**

Types from stainless steel 1.4542 with marking below the balls.

**More information****Notes**

Special types on request.

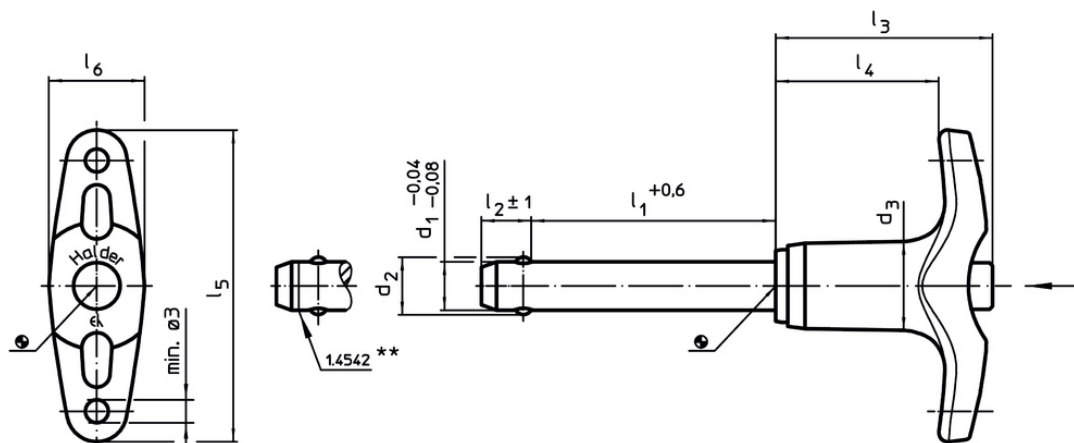
- This product is also available in INCH dimensions.

**Accessories**

Can easily be fitted with retaining cable EH 22400.

**Further products**

- Locating Bushings, for ball lock pins and socket pins
- Locating Bushings, with flange, for ball lock pins and socket pins
- Retaining Cables
- Positioning Bushings, with collar, DIN 172 A
- Positioning Bushings, without collar, DIN 179 A
- Ball Lock Pins with T-handle, single acting - comply with NAS / MS17985

**Drawing**

\*\* Types from stainless steel 1.4542 with marking.