

Ball Lock Pins • self-locking, with button handle

EH 22340. /EH 22350.

**Product Description**

For quick fastening, locking, adjusting, changing and securing. Quickly and easily unlockable for frequently repeated connections.

All versions are corrosion resistant. When using stainless steel 1.4542: high-strength, hardened, abrasion resistant pin with high load capacity.

Compact design with button handle.

Material**Pin part**

- Stainless steel 1.4305
- Stainless steel 1.4542, precipitation-hardened

Handle

- Aluminium, black similar to RAL 9005

Press button

- Stainless steel, black

Spring

- stainless steel

Operation

The balls are unlocked by pressing the button.

Characteristic

Types from stainless steel 1.4542 with marking below the balls.

More information**Notes**

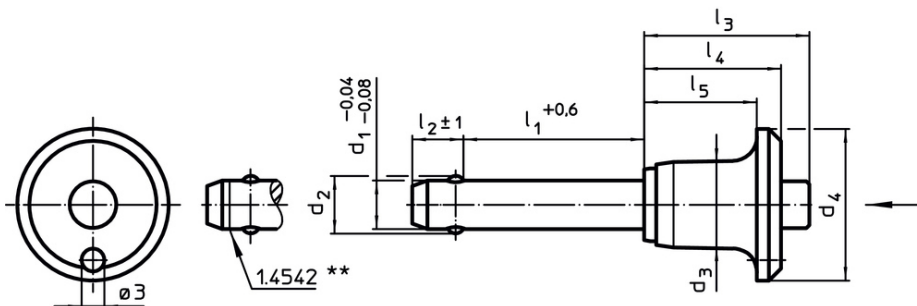
Special types on request.

Accessories

Can easily be fitted with retaining cable EH 22400.

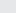

Further products

- Locating Bushings, for ball lock pins and socket pins
- Locating Bushings, with flange, for ball lock pins and socket pins
- Retaining Cables
- Positioning Bushings, with collar, DIN 172 A
- Positioning Bushings, without collar, DIN 179 A
- Ball Lock Pins with Button Handle, single acting - comply with NAS / MS17984

Drawing

** Types from stainless steel 1.4542 with marking.

Order information

Dimensions									Location hole H11	 min. max.	 [g]	Shearing resistance, two-shear ¹⁾ min. [kN]	Art. No.	
d ₁ -0.04 -0.08	l ₁ +0.6	d ₂	d ₃	d ₄	l ₂ ±1	l ₃	l ₄	l ₅	[mm]	[°C]	[g]	[kN]		
[mm]									[mm]	[°C]	[g]	[kN]		
Stainless steel 1.4305														
5	10	5.5	11.3	20	6.0	20.7	17.6	14.6	5	-30	150	12	14	22340.0212
5	15	5.5	11.3	20	6.0	20.7	17.6	14.6	5	-30	150	12	14	22340.0213
5	20	5.5	11.3	20	6.0	20.7	17.6	14.6	5	-30	150	13	14	22340.0214
5	25	5.5	11.3	20	6.0	20.7	17.6	14.6	5	-30	150	14	14	22340.0215
5	30	5.5	11.3	20	6.0	20.7	17.6	14.6	5	-30	150	15	14	22340.0216
5	35	5.5	11.3	20	6.0	20.7	17.6	14.6	5	-30	150	15	14	22340.0217

¹⁾ Shearing resistance similar to DIN 50141