

## Ball Lock Pins • self-locking, with safety handle

### EH 22340. /EH 22350.



#### Product Description

For quick fastening, locking, adjusting, changing and securing. Quickly and easily unlockable for frequently repeated connections.

All versions are corrosion resistant. When using stainless steel 1.4542: high-strength, hardened, abrasion resistant pin with high load capacity.

Robust safety handle (press button not overlaying). Shape of grip protects from unintentional use of the press button.

#### Material

##### Pin part

- Stainless steel 1.4305
- Stainless steel 1.4542, precipitation-hardened

##### Handle

- stainless steel

##### Press button

- stainless steel

##### Spring

- stainless steel

#### Operation

The balls are unlocked by pressing the button.

#### Characteristic

Types from stainless steel 1.4542 with marking below the balls.

#### More information

#### Notes

Special types on request.

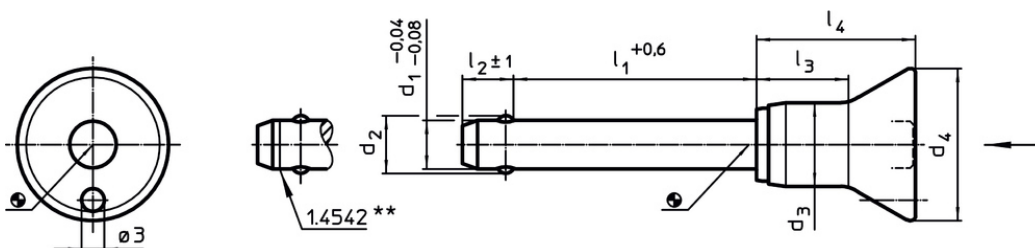
#### Accessories

Can easily be fitted with retaining cable EH 22400.

#### Further products

- Locating Bushings, for ball lock pins and socket pins
- Locating Bushings, with flange, for ball lock pins and socket pins
- Retaining Cables
- Positioning Bushings, with collar, DIN 172 A
- Positioning Bushings, without collar, DIN 179 A

#### Drawing



\*\* Types from stainless steel 1.4542 with marking.

#### Order information

Dimensions								Location hole H11	max.		Shearing resistance, two-shear <sup>1)</sup> min.	Art. No.
d <sub>1</sub>	l <sub>1</sub>	d <sub>2</sub>	d <sub>3</sub>	d <sub>4</sub>	l <sub>2</sub>	l <sub>3</sub>	l <sub>4</sub>					
-0.04 -0.08	+0.6				±1							
[mm]								[mm]	[°C]	[g]	[kN]	
Stainless steel 1.4305												
5	10	5.5	10.3	20	6.0	11.6	21.0	5	250	18	14	22340.1012
5	15	5.5	10.3	20	6.0	11.6	21.0	5	250	19	14	22340.1013
5	20	5.5	10.3	20	6.0	11.6	21.0	5	250	20	14	22340.1014
5	25	5.5	10.3	20	6.0	11.6	21.0	5	250	20	14	22340.1015
5	30	5.5	10.3	20	6.0	11.6	21.0	5	250	21	14	22340.1016
5	35	5.5	10.3	20	6.0	11.6	21.0	5	250	22	14	22340.1017
5	40	5.5	10.3	20	6.0	11.6	21.0	5	250	23	14	22340.1018
5	45	5.5	10.3	20	6.0	11.6	21.0	5	250	23	14	22340.1007
5	50	5.5	10.3	20	6.0	11.6	21.0	5	250	24	14	22340.1008

<sup>1)</sup> Shearing resistance similar to DIN 50141