

Ball Lock Pins • self-locking, with standard handle

EH 22370. /EH 22380.



Product Description

For quick fastening, locking, adjusting, changing and securing. Quickly and easily unlockable for frequently repeated connections.

All versions are corrosion resistant. When using stainless steel 1.4542: high-strength, hardened, abrasion resistant pin with high load capacity.

Compact design with standard handle.

Material

Pin part

- Stainless steel 1.4305
- Stainless steel 1.4542, precipitation-hardened

Spring

- stainless steel

Operation

The balls are unlocked by pressing the button.

Characteristic

Types from stainless steel 1.4542 with marking below the balls.

More information

Notes

Special types on request.

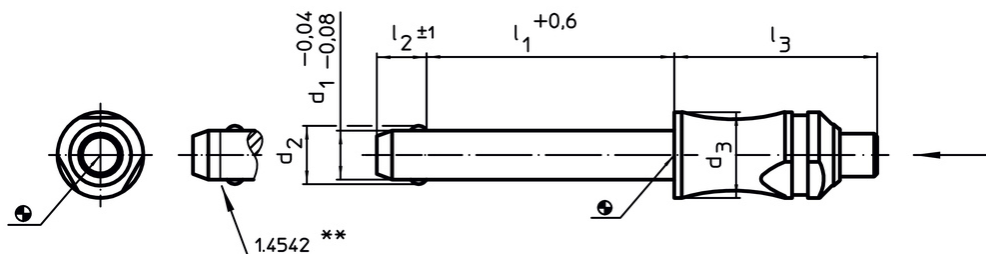
Accessories

Can easily be fitted with retaining cable EH 22400.

Further products

- Ball Lock Pins, self-locking, with standard handle, titanium
- Locating Bushings, for ball lock pins and socket pins
- Locating Bushings, with flange, for ball lock pins and socket pins
- Retaining Cables
- Positioning Bushings, with collar, DIN 172 A
- Positioning Bushings, without collar, DIN 179 A

Drawing



** Types from stainless steel 1.4542 with marking.

Order information

Dimensions						Location hole H11	🌡️ max.	🏋️ [g]	Shearing resistance, two-shear ¹⁾ min.	Art. No.
d ₁	l ₁	d ₂	d ₃	l ₂	l ₃	[mm]	[°C]	[g]	[kN]	
-0.04 -0.08	+0.6			±1						
[mm]										
Stainless steel 1.4305										
5	10	5.5	10	6.0	26.2	5	250	10	14	22370.0012
5	15	5.5	10	6.0	26.2	5	250	11	14	22370.0013
5	20	5.5	10	6.0	26.2	5	250	12	14	22370.0014
5	25	5.5	10	6.0	26.2	5	250	12	14	22370.0015
5	30	5.5	10	6.0	26.2	5	250	13	14	22370.0016
5	35	5.5	10	6.0	26.2	5	250	14	14	22370.0017
5	40	5.5	10	6.0	26.2	5	250	14	14	22370.0018

¹⁾ Shearing resistance similar to DIN 50141