

Self-Aligning Pads • self-resetting

EH 22731.



Product Description

Self-aligning pads are used as stop, support and thrust pad and are suitable for installation in clamping elements.
By resetting to the parallel position the contact point of the self-aligning pad provides a defined initial position, thus preventing the pad clamping in an oblique position when inserting the workpiece.

Material

Spring element

- Thermoplastic PUR

Ball

- Ball-bearing steel, hardened, bright
- Stainless steel 1.3541, nickel-plated

Body

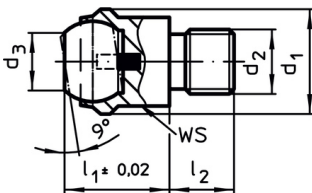
- Heat-treated steel, tempered, phosphated
- Stainless steel 1.4057, heat-treated

More information

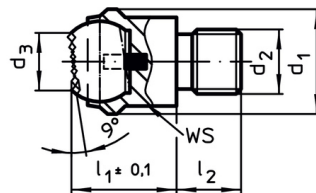
Notes

Ball protected against rotating.
Loading capacity valid for steel and stainless steel designs.

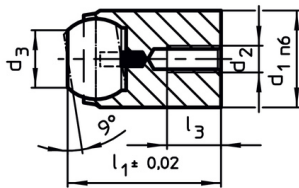
Drawing



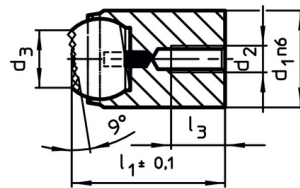
picture 1



picture 2



picture 3



picture 4

Order information

d ₁	d ₂	d ₃	Dimensions				ball diameter	Location hole		WS	Load capacity for static load max.	Tightening torque max.	[g]	Art. No.
			l ₁	l ₂ -0.5	l ₃ max.	[mm]		Ø H7	Depth min.					
with male thread, flat-faced ball, bearing surface plain – picture 1, Heat-treated steel														
13	M 6	7.2	13	8	–	10	–	–	11	10	10.0	12	22731.0012	
13	M 8	7.2	13	8	–	10	–	–	11	10	25.0	13	22731.0013	
20	M 8	10.5	18	10	–	16	–	–	17	25	25.0	38	22731.0018	
20	M10	10.5	18	10	–	16	–	–	17	25	46.0	40	22731.0019	
20	M12	10.5	18	12	–	16	–	–	17	25	82.0	43	22731.0020	
30	M16	20.0	27	16	–	25	–	–	27	90	206.0	149	22731.0030	
50	M20	34.5	35	20	–	40	–	–	41	165	407.0	486	22731.0050	
50	M24	34.5	35	24	–	40	–	–	41	165	698.0	516	22731.0060	
with male thread, flat-faced ball, bearing surface plain – picture 1, stainless steel														
13	M 6	7.2	13	8	–	10	–	–	11	10	10.0	12	22731.0112	
13	M 8	7.2	13	8	–	10	–	–	11	10	25.0	13	22731.0113	
20	M 8	10.5	18	10	–	16	–	–	17	25	25.0	38	22731.0118	
20	M10	10.5	18	10	–	16	–	–	17	25	46.0	39	22731.0119	

¹⁾ Applies only when the minimum bore depth is kept to.