

Thrust Screws • with brass pad EH 22760.



Product Description

Thrust screws can be used for a gentle clamping or pressing of thread spindles, axes, shafts and surface treated parts.

Material

Pad

- Brass

Screw

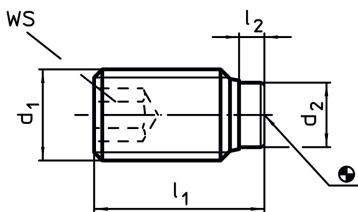
- Heat-treated steel, 1200 ±100 N/mm²
- Stainless steel 1.4305

More information

Further products

- Thrust Screws, with plastic pad

Drawing



Order information

Dimensions				WS	max. [°C]	[g]	Art. No.
d ₁	l ₁	l ₂	d ₂	[mm]			
[mm]							
Heat-treated steel							
M 3	5.0	1.0	1.5	1.5	250	0.1	22760.0032
M 3	7.5	1.0	1.5	1.5	250	0.2	22760.0034
M 3	10.0	1.0	1.5	1.5	250	0.3	22760.0036
M 4	5.0	1.0	2.5	2.0	250	0.3	22760.0040
M 4	6.5	1.2	2.5	2.0	250	0.3	22760.0042
M 4	10.5	1.2	2.5	2.0	250	0.6	22760.0044
M 4	16.5	1.2	2.5	2.0	250	1.0	22760.0046
M 5	6.0	1.0	3.0	2.5	250	0.5	22760.0050
M 5	8.5	1.3	3.0	2.5	250	0.7	22760.0052
M 5	12.5	1.3	3.0	2.5	250	1.2	22760.0054
M 5	20.5	1.3	3.0	2.5	250	2.1	22760.0056
M 6	6.0	1.0	4.0	3.0	250	0.7	22760.0060
M 6	11.5	1.9	4.0	3.0	250	1.5	22760.0062
M 6	17.5	1.9	4.0	3.0	250	2.5	22760.0064
M 6	26.5	1.9	4.0	3.0	250	4.0	22760.0066
M 8	8.0	1.4	5.5	4.0	250	1.7	22760.0080
M 8	12.0	2.5	5.5	4.0	250	2.9	22760.0082
M 8	22.0	2.5	5.5	4.0	250	5.7	22760.0086
M 8	32.0	2.5	5.5	4.0	250	8.7	22760.0088
M10	10.0	1.5	7.0	5.0	250	3.4	22760.0100
M10	14.0	2.7	7.0	5.0	250	5.4	22760.0102
M10	18.0	2.7	7.0	5.0	250	6.7	22760.0104
M10	27.0	2.7	7.0	5.0	250	11.0	22760.0106
M10	37.0	2.7	7.0	5.0	250	16.0	22760.0108
M12	12.0	1.5	8.5	6.0	250	6.4	22760.0120
M12	18.5	3.4	8.5	6.0	250	10.0	22760.0122
M12	22.5	3.4	8.5	6.0	250	12.0	22760.0124
M12	32.5	3.4	8.5	6.0	250	19.0	22760.0126
M12	42.5	3.4	8.5	6.0	250	26.0	22760.0128