

## Nuts for T-Slots · rhombus

EH 23020.

### Product Description

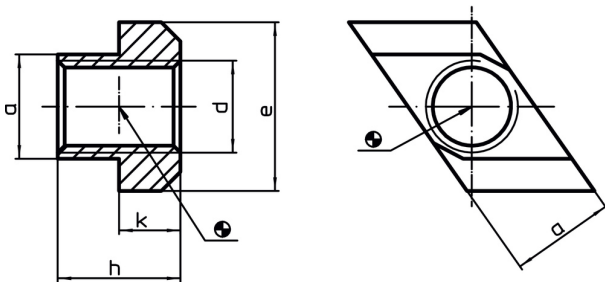
Nuts for T-slots "rhombus" do not have to be inserted lengthwise, but can be inserted directly into the slot.

### Material

- Heat-treated steel, tempered, blackened



### Drawing



### Order information

T-slot size [mm]	Dimensions					[g]	Art. No.
	d	a	e [mm]	h	k		
6	M 5	5.7	10	8	4	2.1	<a href="#">23020.0560</a>
8	M 6	7.6	13	10	6	5.4	<a href="#">23020.0580</a>
10	M 8	9.6	15	12	6	8.8	<a href="#">23020.0600</a>
12	M10	11.6	18	14	7	14.0	<a href="#">23020.0620</a>
14	M12	13.6	22	16	8	23.0	<a href="#">23020.0640</a>
16	M14	15.6	25	18	9	0.7	<a href="#">23020.0660</a>
18	M16	17.6	28	20	10	46.0	<a href="#">23020.0680</a>
20	M18	19.6	32	24	12	69.0	<a href="#">23020.0700</a>
22	M20	21.6	35	28	14	98.0	<a href="#">23020.0720</a>
28	M24	27.6	44	36	18	213.0	<a href="#">23020.0780</a>
36	M30	35.5	54	44	22	423.0	<a href="#">23020.0860</a>
42	M36	41.5	65	52	26	676.0	<a href="#">23020.0920</a>

### Application example

