

Centering Pins

EH 23110.



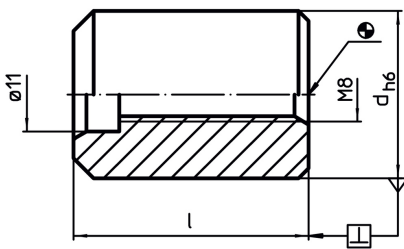
Product Description

The centering pins are used for centering fixtures on pallets.

Material

- Alloyed case-hardened steel, case-hardened, ground

Drawing



Order information

d h6	Dimensions [mm]	l	[g]	Art. No.
20		31	70	23110.0510
25		35	118	23110.0520
50		31	473	23110.0530
50		45	695	23110.0540

Application example

