

U-Handles • plastic, front mounting EH 24320.



Product Description

U-handles are used, for example, on machine doors, furniture doors, cabinet doors, drawers and drawer units.

These U-handles made of glass fibre reinforced plastic are characterised by their ergonomic and stable construction and their simple and timeless design.

Material

Handle

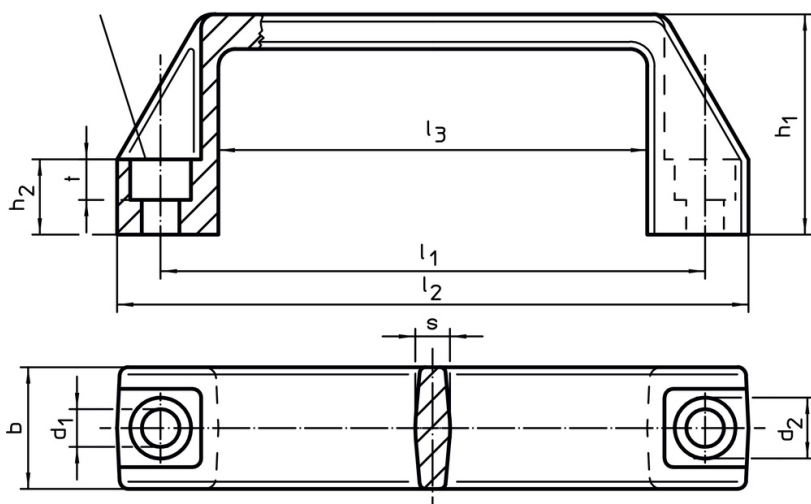
- Thermoplastic PA, glass-fibre reinforced, black

Assembly

Mounting is done from the operating side by means of a cylinder screw.

Drawing

For for cylinder head stud
ISO4762 – M6/M8/M10



Order information

Dimensions										For cylinder screw	🌡️ max.	🔩 [g]	Art. No.
l_1 ±0.5	d_1	b	l_2	d_2	h_1	h_2	l_3	s	t	[mm]	[°C]		
93.5	6.5	21	109	10.5	38	13	74	6.0	7.0	M 6	100	28	24320.0010
117.0	8.5	26	137	13.5	41	15	93	7.0	8.5	M 8	100	42	24320.0020
132.0	8.5	27	150	13.5	45	16	108	7.0	8.5	M 8	100	48	24320.0030
179.0	8.5	28	196	13.5	50	17	151	7.5	8.5	M 8	100	70	24320.0040
235.0	10.5	30	260	16.5	54	20	201	8.5	10.5	M10	100	118	24320.0050