

Palm Grips • DIN 6335 plastic  
EH 24640.



Product Description

Material

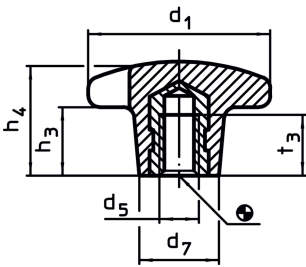
Bushing

- Brass
- Steel, zinc-plated by galvanization
- Stainless steel A2

Handle

- DIN 7708 - thermosetting plastic (PF 31), black similar to RAL 9005

Drawing



Order information

Dimensions						max. [°C]	[g]	Art. No.
d <sub>1</sub>	d <sub>5</sub>	d <sub>7</sub>	h <sub>3</sub>	h <sub>4</sub>	t <sub>3</sub>			
[mm]								
<b>with threaded bushing, form K, Brass</b>								
20	M 4	10	6	13	6.5	110	3.3	<a href="#">24640.0220</a>
<b>with threaded bushing, form K, steel</b>								
25	M 5	12	8	16	9.5	110	7.0	<a href="#">24640.0225</a>
32	M 6	14	10	20	12.0	110	11.0	<a href="#">24640.0232</a>
40	M 8	18	13	25	14.0	110	16.0	<a href="#">24640.0240</a>
50	M10	22	20	32	18.0	110	34.0	<a href="#">24640.0250</a>
63	M12	26	25	40	22.0	110	66.0	<a href="#">24640.0263</a>
80	M16	35	30	50	30.0	110	137.0	<a href="#">24640.0280</a>
<b>with threaded bushing, form K, stainless steel</b>								
25	M 5	12	8	16	9.5	110	7.1	<a href="#">24640.1225</a>
32	M 6	14	10	20	12.0	110	12.0	<a href="#">24640.1232</a>
40	M 8	18	13	25	14.0	110	19.0	<a href="#">24640.1240</a>
50	M10	22	20	32	18.0	110	34.0	<a href="#">24640.1250</a>
63	M12	26	25	40	22.0	110	67.0	<a href="#">24640.1263</a>
80	M16	35	30	50	30.0	110	137.0	<a href="#">24640.1280</a>