

Quick Plug Couplings · with radial offset compensation and screwed flange

EH 25100.



Product Description

Quick plug coupling with radial offset compensation requiring only little space. Suitable for multiple applications, e.g. as a link between a piston rod and a linear-movement unit.

Material

Flange

- Heat-treated steel, tempered, phosphated

Coupling part

- Heat-treated steel, tempered, phosphated

Lock nut

- Steel, black (ISO 4035/8675)

Assembly

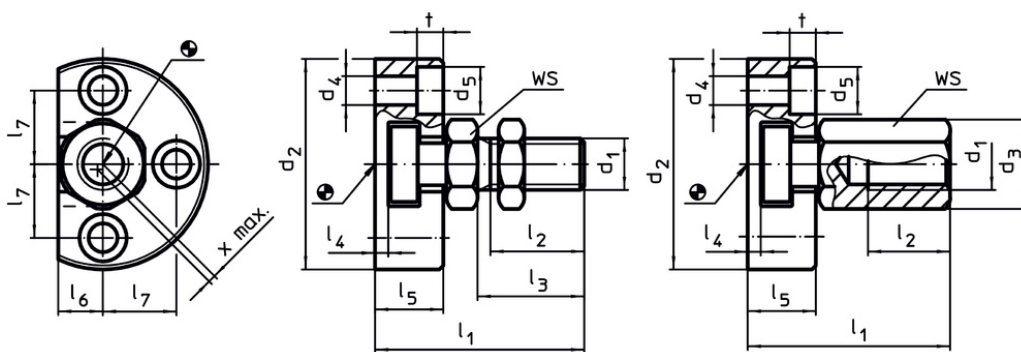
Assembly and disassembly of this simple, solid and two-part coupling is by means of a T-slot; a manual re-adjustment is not necessary. The quick plug coupling can be linked to all commonly used pneumatic and hydraulic lifting cylinders via the connecting thread.

More information

Notes

The quick plug coupling does not transmit any torque.

Drawing



picture 1

picture 2

Order information

d ₁	d ₂	d ₃	d ₄	d ₅	Dimensions							WS	Radial offset compensation x max.	Maximum tensile and compressive load max.	g	Art. No.	
					l ₁	l ₂ min.	l ₃	l ₄	l ₅	l ₆	l ₇						t
[mm]													[mm]	[mm]	[kN]	[g]	
with coupling screw – picture 1																	
M 6	42	–	5.5	10	30.5	11.0	14	3.0	11.0	7.0	14.0	5.4	10	0.6	2.5	75	25100.0206
M 8	48	–	6.6	11	35.5	13.5	17	3.0	13.0	8.0	16.0	6.4	13	0.7	4.5	118	25100.0208
M10	50	–	6.6	11	43.2	16.0	20	4.2	16.0	9.0	17.0	6.4	17	0.7	6.5	175	25100.0210
M12	55	–	6.6	11	53.2	21.0	25	4.2	20.5	10.0	19.0	6.4	19	0.8	10.0	279	25100.0212
M16	65	–	9.0	15	64.0	25.0	30	5.0	23.0	12.5	22.5	8.5	24	1.0	18.0	455	25100.0216
M20	80	–	11.0	18	74.0	29.0	35	5.0	26.0	17.0	28.0	10.0	30	1.0	30.0	810	25100.0220
M10 x 1,25	50	–	6.6	11	43.2	16.0	20	4.2	16.0	9.0	17.0	6.4	17	0.7	6.5	176	25100.0230
M12 x 1,25	55	–	6.6	11	53.2	21.0	25	4.2	20.5	10.0	19.0	6.4	19	0.8	10.0	280	25100.0232
M16 x 1,5	65	–	9.0	15	64.0	25.0	30	5.0	23.0	12.5	22.5	8.5	24	1.0	18.0	454	25100.0236
M20 x 1,5	80	–	11.0	18	74.0	29.0	35	5.0	26.0	17.0	28.0	10.0	30	1.0	30.0	812	25100.0240
with coupling nut – picture 2																	
M 6	42	11.0	5.5	10	30.5	11.0	–	3.0	11.0	7.0	14.0	5.4	10	0.6	2.5	77	25100.0256
M 8	48	14.4	6.6	11	35.5	13.5	–	3.0	13.0	8.0	16.0	6.4	13	0.7	4.5	123	25100.0258
M10	50	19.0	6.6	11	43.2	15.0	–	4.2	16.0	9.0	17.0	6.4	17	0.7	6.5	187	25100.0260
M12	55	21.2	6.6	11	53.2	17.5	–	4.2	20.5	10.0	19.0	6.4	19	0.8	10.0	295	25100.0262
M16	65	27.0	9.0	15	64.0	22.0	–	5.0	23.0	12.5	22.5	8.5	24	1.0	18.0	471	25100.0266
M20	80	34.0	11.0	18	74.0	25.0	–	5.0	26.0	17.0	28.0	10.0	30	1.0	30.0	850	25100.0270