

No.	Part Name	Material	Colour
①	Bracket A	POM	Black, White
②	Bracket B		
③	Bracket C		
-	Damper URD8-3	POM, etc.	-
-	Spring Unit URS8	-	-
-	Torque Unit URT8	-	-

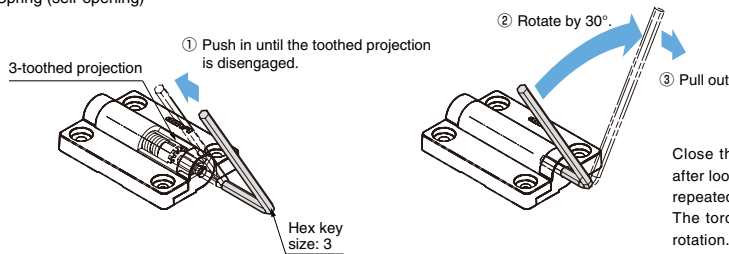
Lateral-opening door weight: Max. 810g
 Reference door size: W300×H450×t 5 mm
 Acrylic plate, Density 1.2 g/cm³

RoHS	CAD	Item Code	Item Name	Part Built-in	ID Stamp	Colour	Torque N·m/pc	Torque kgf·cm/pc	Opening Angle	Weight (g)	Box (pcs)	Carton (pcs)	
✔	3D	170-032-616	HG-VH8-N-BL	-	N	Black	-	-	270°	11	40	640	
✔	3D	170-032-617	HG-VH8-N-WT	-	N	White	-	-					
✔	3D	170-032-618	HG-VH8-D3-BL	Damper	D3	Black	0.022~0.038	0.22~0.39		14	40	640	
✔	3D	170-032-619	HG-VH8-D3-WT			White							
✔	3D	170-032-620	HG-VH8-OP-BL	Spring (self-opening)	OP	Black	*	*			18	40	640
✔	3D	170-032-621	HG-VH8-OP-WT			White							
✔	3D	170-032-622	HG-VH8-CL-BL	Spring (self-closing)	CL	Black	0.15±0.05	1.53±0.51		19		40	640
✔	3D	170-032-623	HG-VH8-CL-WT			White							
✔	3D	170-032-624	HG-VH8-T15-BL	Torque	T1	Black	0.35±0.1	3.57±1.02			40	640	
✔	3D	170-032-625	HG-VH8-T15-WT			White							
✔	3D	170-032-626	HG-VH8-T35-BL			Black				T3			0.35±0.1
✔	3D	170-032-627	HG-VH8-T35-WT	White									

* Increased by 0.0153N·m (0.16kgf·cm) by adjusting the spring tension. The initial value of the spring tension is 0N·m.

[How to Adjust Spring Tension]

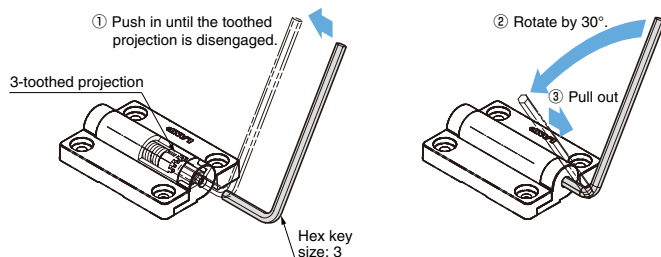
● Spring (self-opening)



Close the lid, and check if the lid can be opened smoothly after loosening your hand(s). If the spring tension is not enough, repeated steps ① ~ ③.

The torque will be increased by 0.0153N·m at each 30° of rotation. Generally no more than 4 times (120°) are required. To restore to the initial state, rotate in the direction opposite to above.

● Spring (Self-closing)



Open the lid and check if the lid can be closed smoothly after loosening your hand(s). If the spring tension is not enough, repeated steps ① ~ ③.

The torque will be increased by 0.0153N·m at each 30° of rotation. Generally no more than 4 times (120°) are required. To restore to the initial state, rotate in the direction opposite to above.