

CONCEALED TORQUE HINGE HG-TU

SUS



- Installation on the back side of the door for clean appearance.
- Can be used horizontally or vertically.
- A torque-free type (HG-TUF) is newly available. The total torque force can be adjusted by using both torque and torque-free types.

[Specifications]

- Temperature: -10 °C ~ 50 °C

[Remarks]

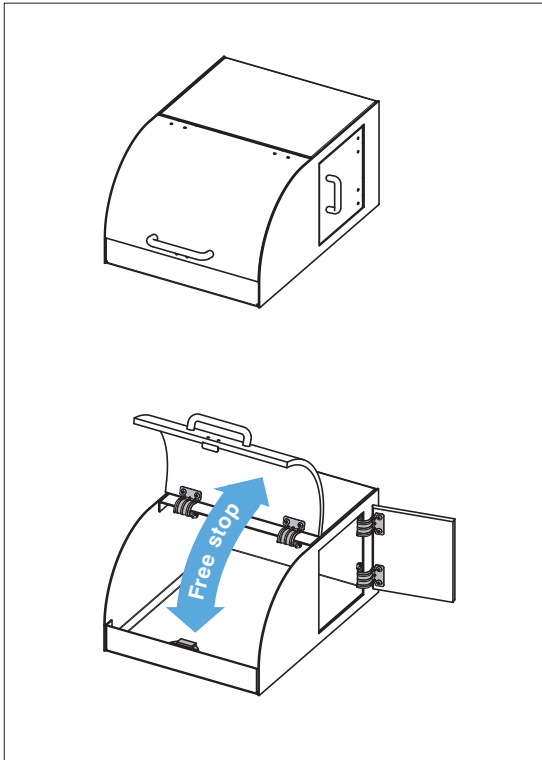
- Be sure to read the "Cautions" **1**.
- When installing, ensure that both hinge shafts are aligned.

Selection Tool

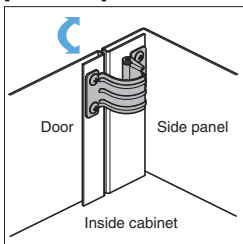


Sasuga-kun

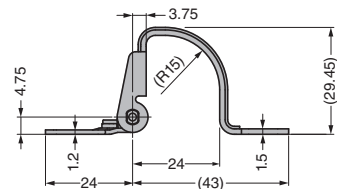
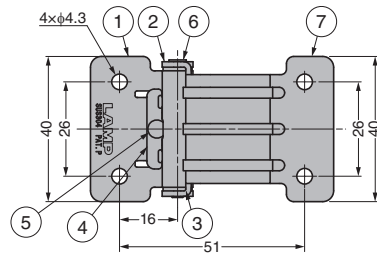
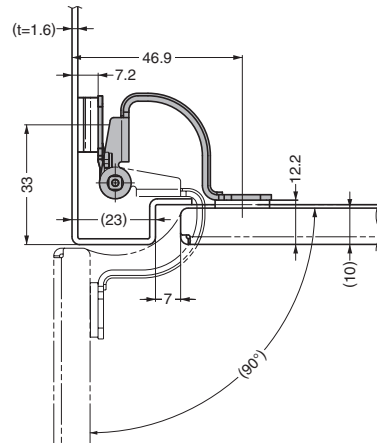
[Application Example]



[Installation]



[Dimensions]



No.	Part Name	Material	Finish / Colour
①	Body	Stainless Steel (SUS304)	Barrel Polished
②	Fixing Tube L	POM	Black
③	Fixing Tube R		
④	Press Washer	Stainless Steel (SUS304)	Barrel Polished
⑤	Pin	Stainless Steel	-
⑥	Shaft	Stainless Steel (SUS303)	
⑦	Base	Stainless Steel (SUS304)	

RoHS	CAD	Item Code	Item Name	Torque N·m/pc※	Torque kgf·cm/pc※	Weight (g)	Box (pcs)	Carton (pcs)
		170-022-304	HG-TU03	0.35 ^{+40%} / _{-20%}	3.6 ^{+40%} / _{-20%}	50	20	200
		170-022-305	HG-TU07	0.7 ^{+40%} / _{-20%}	7.1 ^{+40%} / _{-20%}			
		170-052-628	HG-TUF	-	-			

Refer to **1** : P.43

※ Since torque will decrease due to long-term use, temperature, humidity and other factors, it is set to a higher level at delivery.