

CONCEALED TORQUE HINGE HG-TUWA Wide-opening



- High torque and wide opening angle (130°) type of HG-TU **1**.
- Installation on the back side of the door for clean appearance.
- Can be used horizontally or vertically.

[Remarks]

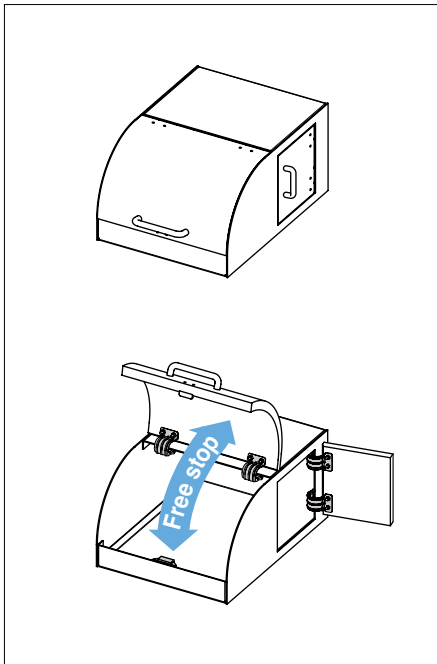
- Be sure to read the "Cautions" **2**.
- When installing, ensure that both hinge shafts are aligned.

Selection Tool

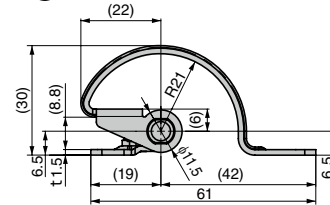
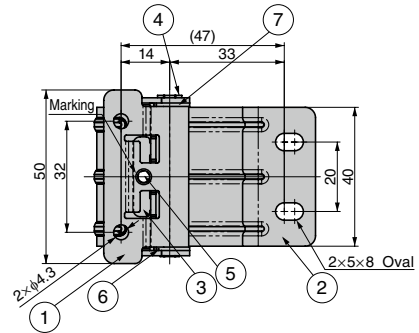
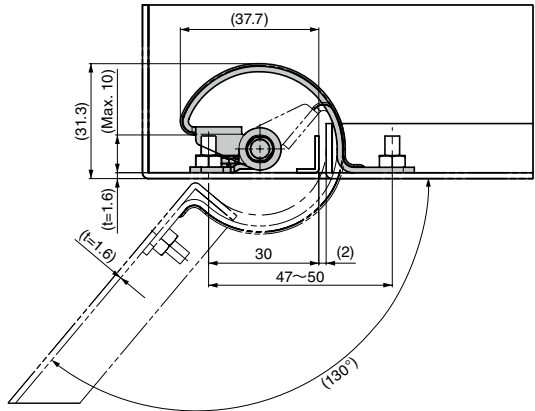
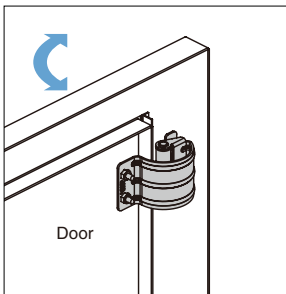


Sasuga-kun

[Application Example]



[Installation]



No.	Part Name	Material	Finish/Colour
①	Body	Stainless Steel (SUS304)	Barrel Polished
②	Base		
③	Press Washer		
④	Shaft	Stainless Steel (SUS303)	-
⑤	Pin	Stainless Steel	
⑥	Fixing Tube L	POM	Black
⑦	Fixing Tube R		

RHS	CAD	Item Code	Item Name	Torque N·m/pc	Torque kgf·cm/pc	Weight (g)	Box (pcs)	Carton (pcs)
		170-034-313	HG-TUWA07	0.7 ^{+40%} / _{-20%}	7.1 ^{+40%} / _{-20%}	88	20	100
		170-034-314	HG-TUWA15	1.5 ^{+40%} / _{-20%}	15.3 ^{+40%} / _{-20%}		20	100

Refer to **1** : P.54, **2** : P.43