

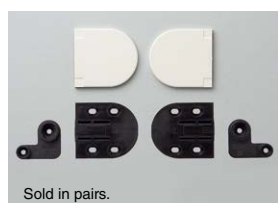
DAMPER HINGE HG-JHM16



INSTRUCTION

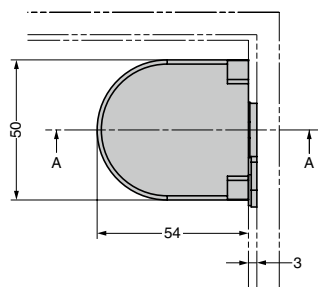


W/ black cover

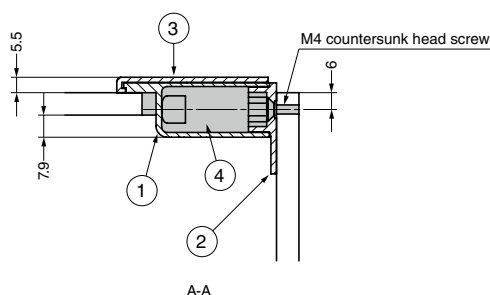


W/ white cover

[Top View]



[Cross-section Drawing]



No.	Part Name	Material	Finish / Colour
①	Body	POM	Black
②	Bracket	Aluminium Alloy (ADC)	Black Enamel Finish
③	Cover	ABS	Black/White
④	Damper	-	-

RoHS	CAD	Item Code	Item Name	Colour	Torque N·m/pair	Torque kgf·cm/pair	Marking Colour (Base Side)	Weight (g)	Box (pairs)	Carton (pairs)
6	3D	170-092-221	HG-JHM16-34BL	Black	2~3.4	20.4~34.7	Green	126	-	-
6	3D	170-092-222	HG-JHM16-34WT	White				126	-	-
6	3D	170-092-223	HG-JHM16-50BL	Black	3.4~5	34.7~51	Black	126	-	-
6	3D	170-092-224	HG-JHM16-50WT	White				126	-	-

Refer to 1 : P.116, 2 : P.43

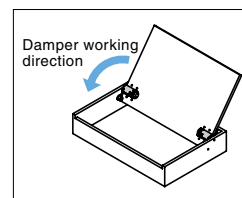
- Hinge with built-in damper UDH-16 1.
- Smooth movement in the opening direction.
- Mortise mount type.
- Easy to cut out with a router.
- Cover hides mounting screws for clean appearance.

[Remarks]

- Be sure to read the "Cautions" 2.
- Sold in pairs.
- When installing, ensure that both hinge shafts are levelled and aligned.
- Damper mechanism works when opening the lid by about 60° or more.

[Parts Included]

- Countersunk head tapping screw 4×20 (For wooden door)

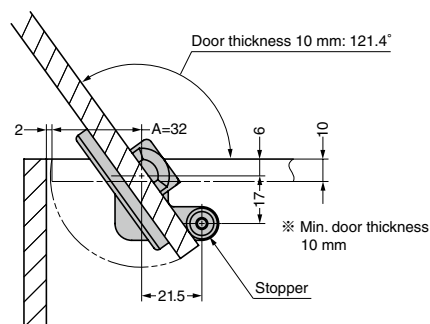


Selection Tool

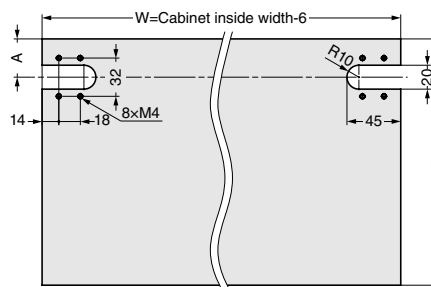


Sasuga-kun

[Installation]



[Cut Out Dimensions]

TORQUE
HINGESDAMPER
HINGESLIFT
ASSIST
HINGESDETENT
HINGESCONCEALED
HINGESBUTT
HINGESPIANO
HINGESSTEP
HINGESLIFT-
OFF
HINGESPIVOT
HINGESSPRING
HINGESCLEAN
ROOM
HINGESHINGES FOR
ALUMINIUM
FRAMEDROP
HINGESGLASS
DOOR
HINGESSPECIAL
HINGES