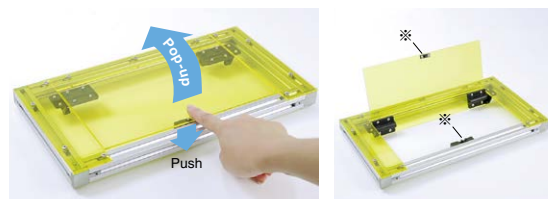
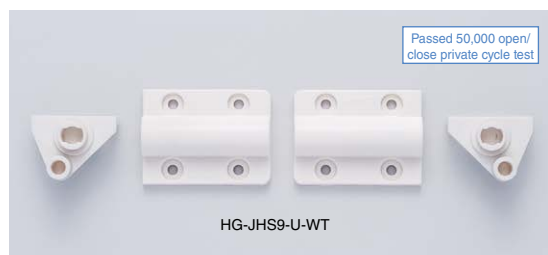


# SELF-OPEN MINI DAMPER HINGE HG-JHS9-U Under Mount

INSTRUCTION



※: Optional push latch ESN-195/BLK 1 .

- Small damper hinge with self-opening function for top-opening lids. Using with a push latch 1 enables pop-up function of the lid.
- Inset type.
- Opening speed is adjustable with a hex key.
- Side mount type 2 also available.

## [Specifications]

- Operating temperature: 0°C~40°C

## [Applications]

- Small lid for conference table, small cover of mechanical equipment, etc.

## [Remarks]

- Be sure to read the "Cautions" 3 .
- Sold in pairs.
- Make sure to mount spring unit at L side of the body. Check if damper is mounted at R side.
- When installing, ensure that both hinge shafts are levelled and aligned.
- Install a push latch (sold separately) to keep the lid at closed position.

## [Recommended Screws]

- Binding head screw M3, Binding head tapping screw 3, etc.

Video Link



Video Link



TORQUE HINGES

DAMPER HINGES

LIFT ASSIST HINGES

DETENT HINGES

CONCEALED HINGES

BUTT HINGES

PIANO HINGES

STEP HINGES

LIFT-OFF HINGES

PIVOT HINGES

SPRING HINGES

CLEAN ROOM HINGES

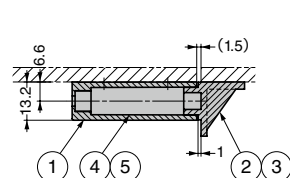
HINGES FOR ALUMINIUM FRAME

DROP HINGES

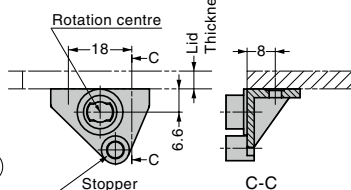
GLASS DOOR HINGES

SPECIAL HINGES

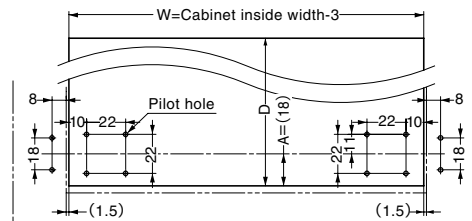
## [Front View] Cross-section



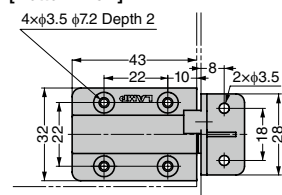
## [Installation] Bracket



## [Cut Out Dimensions]



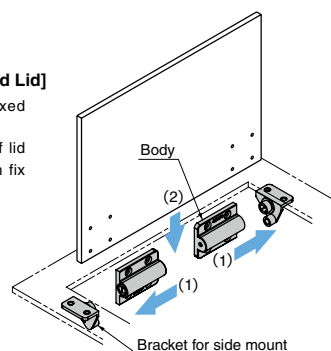
## [Bottom View]



No.	Part Name	Material	Colour
①	Body	POM	Black, White
②	Bracket R	PBT	
③	Bracket L		
④	Damper (R side)	POM	—
⑤	Spring Unit (L side)	Zinc Alloy (ZDC) /Stainless Steel	Chromate/-

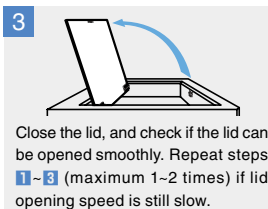
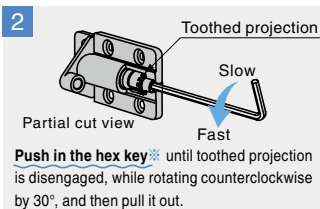
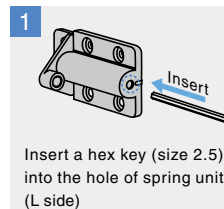
## [How to Install Body and Lid]

- (1) Insert the body into fixed bracket.
- (2) Align mounting holes of lid with the body, and then fix with screws.



## [Adjustment of Lid Opening Speed]

### When increasing lid opening speed



### When decreasing lid opening speed (returning to the speed before adjustment)

Loosen the force following the hex key rotating clockwise.

※Make sure to rotate counterclockwise following pushing in the hex key and disengaging the projection. Forced rotation may cause damage.

RoHS	CAD	Item Code	Item Name	Colour	Torque N·m/pair	Torque kgf·cm/pair	Opening Angle	Weight (g/pair)	Box (pairs)	Carton (pairs)
6	3D	170-028-295	HG-JHS9-U-BL	Black	0.027~0.043	0.275~0.44	105°	38	35	385
6	3D	170-028-296	HG-JHS9-U-WT	White					35	385

Refer to 1 : P.477, 2 : P.110, 3 : P.43