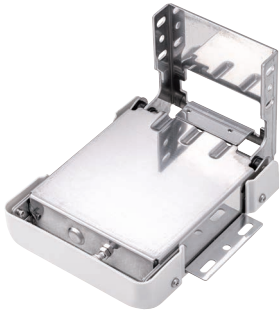


LIFT-ASSIST HINGE HG-PA230, HG-PA231 Inside Mount



Lift assist
Soft-close

- The torque peaks at 20° or 35° depending on the lid shape (see diagram below).
- Easy to lift heavy top-opening lid with spring tension (lift assist function).
- Smooth and soft-closing movement at the end, preventing lid from slamming shut.
- Torque is adjustable by turning the adjustment screw (±5%).
- Able to limit the 140° opening angle to 55° or 80° with use of the included stopper plate.
- Opening angle can also be restricted between 15° and 90° (made to order).



[Remarks]

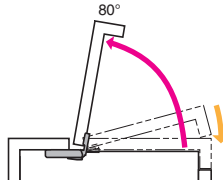
- Be sure to read the "Cautions" 1.
- For HG-PA230 and HG-PA231, centre-of-gravity positions of the applicable doors are different. Please refer to How to Select 2 for model selection.
- Install a stopper (not included) on the cabinet to prevent from exceeding the operating angle during opening or closing.

Video Link



[Operating Range]

- Lift assist
- Soft-close



Selection Tool

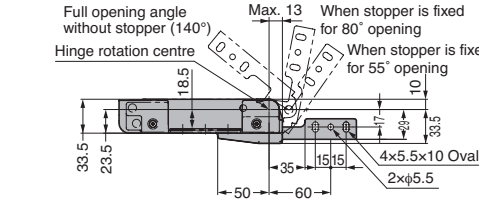
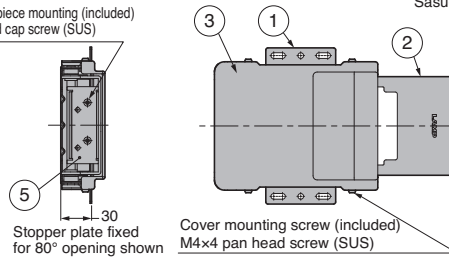
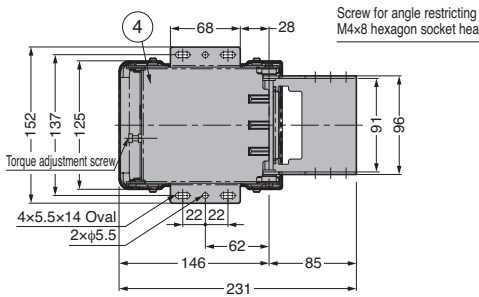


Video Link



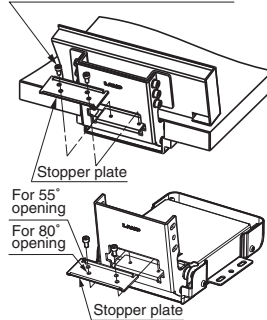
Sasuga-kun

No.	Part Name	Material / Colour
①	Base A	Stainless Steel (SUS430)
②	Base B	
③	Cover	PP/Light Grey
④	Case	Stainless Steel (SUS430)
⑤	Stopper Plate	
-	Slider	POM
-	Spring	Steel (SWO)

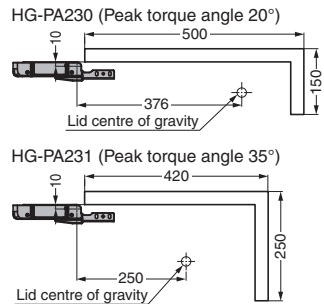


[Setting of Opening angle]

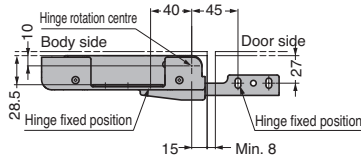
Opening angle can be limited to 55° or 80° with the included stopper plate.
Hexagon socket head cap screw M4x8 (provided)



[Installation]



[Installation]



*Opening angle can be limited to 55° or 80° with the included stopper plate.

RefS	CAD	Item Code	Item Name	Description	Torque N·m/pc	Torque kgf·cm/pc	Weight (g)	Box (pcs)	Carton (pcs)
G	3D	170-025-671	HG-PA230-15	Peak torque angle 20°	15±10%	153±10%	1296	1	8
G	3D	170-025-672	HG-PA230-20		20±10%	204±10%		1	8
G	3D	170-025-673	HG-PA230-25		25±10%	255±10%		1	8
G	3D	170-029-744	HG-PA231-15	Peak torque angle 35°	15±10%	153±10%		1	8
G	3D	170-029-745	HG-PA231-20		20±10%	204±10%		1	8
G	3D	170-029-746	HG-PA231-25		25±10%	255±10%		1	8

Refer to 1 : P.43, 2 : P.123