

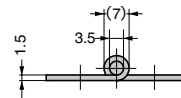
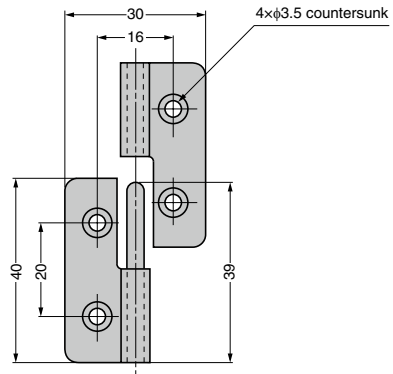
# LIFT-OFF HINGE NH-40



- Steel hinge without mounting holes also available.

**[Remarks]**

- Load capacity is the value when using two hinges. For calculation conditions, please refer to INDEX **1**.
- Please be sure to chamfer the mounting surface for screws and rivets.



Right-handed type shown.  
Left-handed type is symmetrical.

RoHS	CAD	Item Code	Item Name	Type	Material	Finish	Load Capacity N/2 pcs	Load Capacity kgf/2 pcs	Weight (g)	Box (pcs)	Carton (pcs)
		170-090-339	NH-40CL	Left-handed	Stainless Steel (SUS304)	Polished	69	7	21	150	600
		170-090-337	NH-40CR	Right-handed						150	600

Refer to : P.43

TORQUE HINGES

DAMPER HINGES

LIFT ASSIST HINGES

DETENT HINGES

CONCEALED HINGES

BUTT HINGES

PIANO HINGES

STEP HINGES

LIFT-OFF HINGES

# LIFT-OFF HINGE SNR65



**Discontinued**

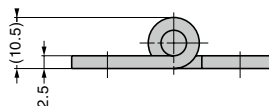
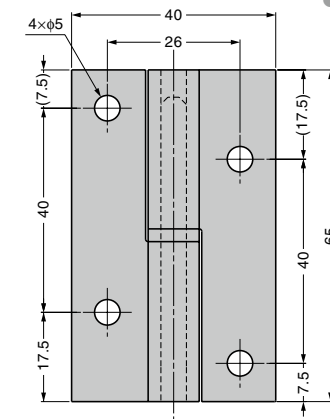
Limited stock available.  
Please contact your vendor.



- Handed: Specific left and right hand mounting.

**[Remarks]**

- Load capacity is the value when using two hinges. For calculation conditions, please refer to INDEX **1**.



Right-handed type shown. Left-handed type is symmetrical.

RoHS	CAD	Item Code	Item Name	Type	Material	Finish	Load Capacity N/2 pcs	Load Capacity kgf/2 pcs	Weight (g)	Box (pcs)
		170-099-046	SNR65L	Left-handed	Stainless Steel (SUS304)	Plain	177	18	76.2	200
		170-099-043	SNR65R	Right-handed						200

Refer to : P.43

PIVOT HINGES

SPRING HINGES

CLEAN ROOM HINGES

HINGES FOR ALUMINIUM FRAME

DROP HINGES

GLASS DOOR HINGES

SPECIAL HINGES