

# QUICK RELEASE HINGE **HG-OT** Quick Installation Type

SUS

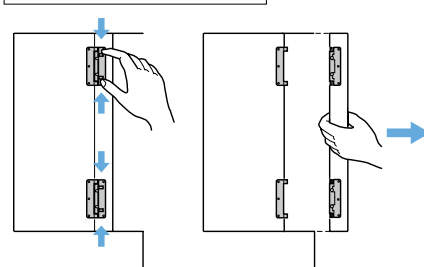
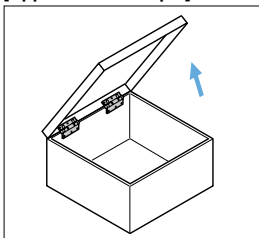


- Easy and quick to install/remove doors.
- Non-handed except for HG-OTA45, HG-OTB45.
- Can be used for upward-opening doors, top-opening lids and lateral opening doors.

## [Remarks]

- Load capacity is the value when using two hinges. For calculation conditions, please refer to INDEX **1** .

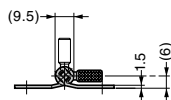
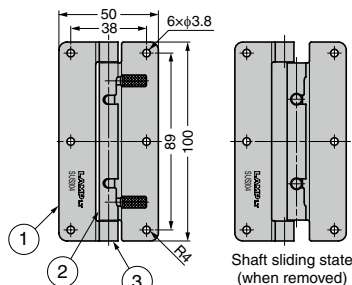
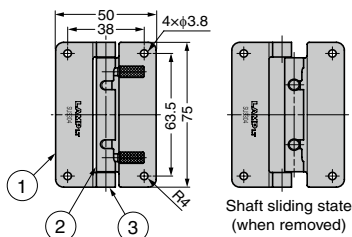
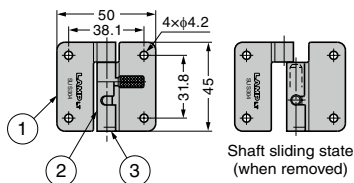
## [Application Example]



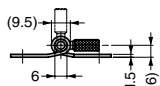
Retract the shaft and rotate it to the cabinet side.

Can be installed and removed in the front direction.

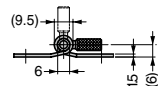
## [Retracted Shaft]



HG-OTA45L



HG-OTA75



HG-OTA100

No.	Part Name	Material	Finish
①	Plate	Stainless Steel (SUS304)	Satin
②	Hinge Pin	Stainless Steel (SUS303)	Plain
③	Spring	Stainless Steel (SUS304)	

RoHS	CAD	Item Code	Item Name	Type	Holes	Load Capacity N/2 pcs	Load Capacity kgf/2 pcs	Weight (g)	Box (pcs)	Carton (pcs)
✓	3D	170-090-944	HG-OTA45R	Right-handed	With screw holes	29	3	40	30	300
✓	3D	170-090-946	☆HG-OTB45R	Left-handed	Without screw holes				30	300
✓	3D	170-090-945	HG-OTA45L		With screw holes				30	300
✓	3D	170-090-947	☆HG-OTB45L	Non-handed	Without screw holes	59	6	70	40	160
✓	3D	170-090-942	HG-OTA75		With screw holes				40	160
✓	3D	170-090-943	☆HG-OTB75		Without screw holes	69	7	90	30	120
✓	3D	170-090-940	HG-OTA100		With screw holes				30	120
✓	3D	170-090-941	☆HG-OTB100		Without screw holes				30	120

Refer to **1** : P.43

☆Limited stock available. Please contact your local agent or your nearest Sugatsune subsidiary for detail/availability.