

TORQUE  
HINGESDAMPER  
HINGESLIFT  
ASSIST  
HINGESDETENT  
HINGESCONCEALED  
HINGESBUTT  
HINGESPIANO  
HINGESSTEP  
HINGESLIFT-  
OFF  
HINGESPIVOT  
HINGESSPRING  
HINGESCLEAN  
ROOM  
HINGESHINGES FOR  
ALUMINIUM  
FRAMEDROP  
HINGESGLASS  
DOOR  
HINGESSPECIAL  
HINGESGLASS DOOR HINGE **GH34-0** For Inset Door

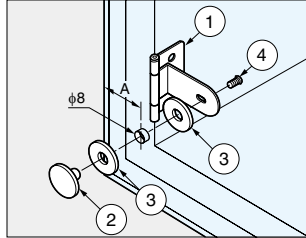
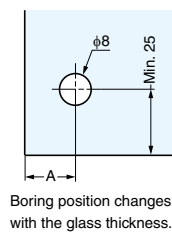
TEMPERED GLASS

● Hinge for glass/acrylic doors. Square plate type GH34-0CR-K **1** also available.**[Recommended Screw]**

● Countersunk tapping screw 3 / Countersunk wood screw 3.1 / Countersunk screw pan head M3

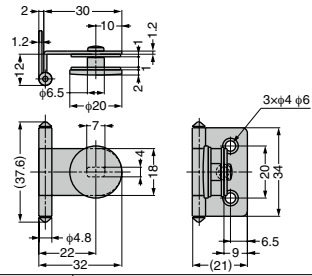
**[Remarks]**

- Recommended for use in pairs.
- Use screw loosening prevention agent when mounting screws.
- Note that scratch is conspicuous on black surface.
- Load capacity is the value when using two hinges. For calculation conditions, please refer to INDEX **2**.
- Please consider using tempered glass depending on glass size, application, and environment.
- When mounting on sheet metal, make a relief cut for screws/rivets on the mounting surface.
- Place one washer on the plate side, and the remaining washers on the opposite side.

**[Parts Composition]****[Cut Out Dimensions]**

Boring position changes with the glass thickness.

Glass Thickness	A	Number of washers used
4	19	4
5	18	3
6	17	2



No.	Part Name	Material	Finish / Colour
①	Body	Steel	Chrome, Paint/Black, Gold, Clear
②	Plate	Zinc Alloy (ZDC)	
③	Washer	PVC	Clear
④	※Screw	Steel	Nickel, Paint/Black, Gold, Clear

※ Cross-recessed binding pan head screw M3.5 x 6

RHS	CAD	Item Code	Item Name	Finish	Door Width	Door Height	Glass Thickness	Load Capacity N/2 pcs	Load Capacity kgf/2 pcs	Weight (g)	Box (pcs)	Carton (pcs)
G	3D	170-083-513	GH34-0CR	Chrome	Max. 450	Max. 700	4, 5, 6	39	4	23.5	50	500
G	3D	170-025-831	GH34-0BL	Paint/Black							50	500
-	3D	170-012-158	GH34-0G	Gold, Clear							200	-

Refer to **1** : P.274, **2** : P.43

※ Load capacity has priority over glass size.

GLASS DOOR HINGE **GH34-0CR-K** For Inset Door

TEMPERED GLASS



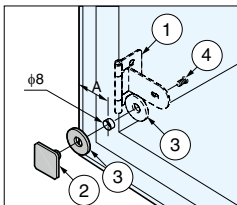
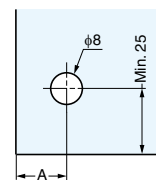
● Hinge for glass/acrylic doors.

● Round plate type GH34-0CR **1** also available**[Recommended Screw]**

● Countersunk tapping screw 3 / Countersunk wood screw 3.1 / Countersunk screw pan head M3

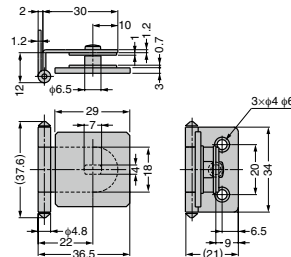
**[Remarks]**

- Recommended for use in pairs.
- When mounting screws, use a screw loosening prevention agent.
- Load capacity is the value when using two hinges. For calculation conditions, please refer to INDEX **2**.
- Please consider using tempered glass depending on glass size, application, and environment.
- When mounting on sheet metal, make a relief cut for screws/rivets on the mounting surface.
- Place one washer on the plate side, and the remaining washers on the opposite side.

**[Parts Composition]****[Cut Out Dimensions]**

Boring position changes with the glass thickness.

Glass Thickness	A	Number of washers used
4	19	4
5	18	3
6	17	2



No.	Part Name	Material	Finish / Colour
①	Body	Steel	Chrome
②	Plate	Zinc Alloy (ZDC)	
③	Washer	PVC	Clear
④	※Screw	Steel	Nickel

※ Cross-recessed binding pan head screw M3.5 x 6

RHS	CAD	Item Code	Item Name	Door Width	Door Height	Glass Thickness	Load Capacity N/2 pcs	Load Capacity kgf/2 pcs	Weight (g)	Box (pcs)	Carton (pcs)
G	3D	170-019-481	GH34-0CR-K	Max. 450	Max. 700	4, 5, 6	39	4	34	50	300

Refer to **1** : P.274, **2** : P.43

※ Load capacity has priority over glass size.