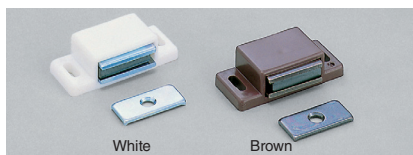
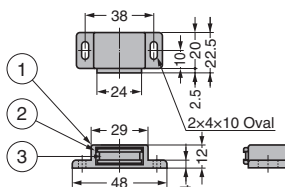


MAGNETIC CATCH MC200



No.	Part Name	Material	Finish / Colour
①	Body	PE	White, Brown
②	Yoke	Steel (SPCC)	Bright chromate treatment (trivalent)
③	Magnet	Ferrite	-
④	Counter Plate	Steel (SPCC)	Bright chromate treatment (trivalent)

※ The finishes will be "Clear Zinc Chromate (Trivalent)" when the current stock is run out.

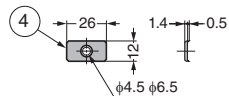


[Remarks]

● Be sure to read the "Cautions" 1

[Parts Included]

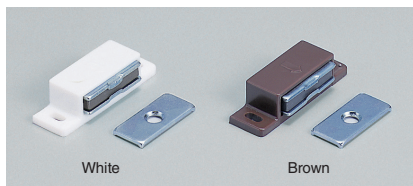
● Counter plate



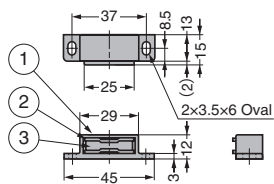
RoHS	CAD	Item Code	Item Name	Colour	Magnetic Force N	Magnetic Force kgf	Weight (g)	Box (pcs)	Carton (pcs)
RoHS	3D	140-058-030	MC200W	White	34.3	3.5	20	100	1000
RoHS	3D	140-058-031	MC200BR	Brown				100	1000
RoHS	3D	140-058-032	MC200W-1	White	53.9	5.5		100	1000
RoHS	3D	140-058-033	MC200BR-1	Brown				100	1000

Refer to 1 : P.431

MAGNETIC CATCH MC009



No.	Part Name	Material	Finish / Colour
①	Body	PE	White, Brown
②	Yoke	Steel (SPCC)	Clear Zinc Chromate
③	Magnet	Ferrite	-
④	Counter Plate	Steel (SPCC)	Clear Zinc Chromate

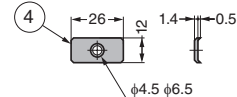


[Remarks]

● Be sure to read the "Cautions" 1

[Parts Included]

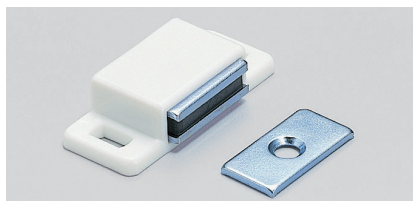
● Counter plate



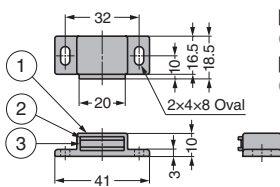
RoHS	CAD	Item Code	Item Name	Colour	Magnetic Force N	Magnetic Force kgf	Weight (g)	Box (pcs)	Carton (pcs)
RoHS	3D	140-040-008	MC009W	White	24.5	2.5	17	100	1000
RoHS	3D	140-058-010	MC009BR	Brown				100	1000
RoHS	3D	140-040-009	MC009SW	White	49	5		100	1000
-	3D	140-058-012	MC009SBR	Brown				100	1000

Refer to 1 : P.431

MAGNETIC CATCH MC0097



No.	Part Name	Material	Finish / Colour
①	Body	PE	White, Black
②	Yoke	Steel (SPCC)	Clear Zinc Chromate (Trivalent)
③	Magnet	Ferrite	-
④	Counter Plate	Steel (SPCC)	Clear Zinc Chromate (Trivalent)

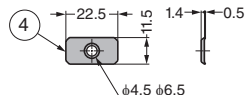


[Remarks]

● Be sure to read the "Cautions" 1

[Parts Included]

● Counter plate



RoHS	CAD	Item Code	Item Name	Colour	Magnetic Force N	Magnetic Force kgf	Weight (g)	Box (pcs)	Carton (pcs)
RoHS	3D	140-050-331	MC0097W	White	14.7	1.5	12	100	1000
RoHS	3D	140-050-332	MC0097B	Black				100	1000
RoHS	3D	140-050-329	MC0097W-1	White	34.3	3.5		100	1000
RoHS	3D	140-050-330	MC0097B-1	Black				100	1000

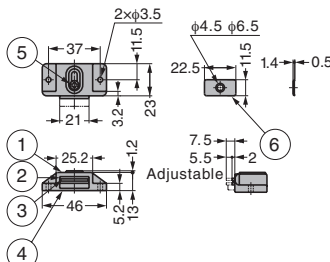
Refer to 1 : P.431

MAGNETIC CATCH MC84



No.	Part Name	Material	Finish / Colour
①	Body	ABS	Brown, Beige
②	Yoke	Steel (SPCC)	Bronze※, Nickel※
③	Magnet	Ferrite	-
④	Back Cover	ABS	Brown, White
⑤	Screw	Steel (SS)	-
⑥	Counter Plate	Steel (SPCC)	Bronze※, Nickel※

※ The finishes will be "Clear Zinc Chromate (Trivalent)" when the current stock is run out.



● Yoke position adjustable 5.5mm back and forward.

[Remarks]

● Be sure to read the "Cautions" 1

[Parts Included]

- Counter plate
- Pan head wood screw 3.1×13
- Countersunk head wood screw 2.7×13

RoHS	CAD	Item Code	Item Name	Colour	Magnetic Force N	Magnetic Force kgf	Weight (g)	Box (pcs)	Carton (pcs)
RoHS	3D	140-058-046	MC84BR	Brown	29.4	3	18	100	1000
RoHS	3D	140-058-047	MC84BG	Beige				100	1000

Refer to 1 : P.431