

MAGNETIC CATCH MC-158, MC-159



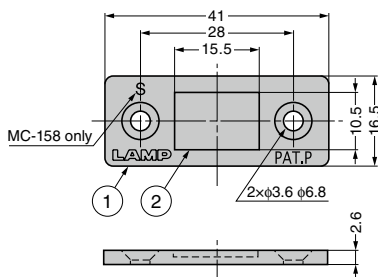
- Ultra thin magnetic catch of 2.6mm thick ideal for tight spaces.
- Small body with strong magnetic force by using neodymium magnet.
- Similar items (extra strong magnetic force): MC-159-8 **1**, MC-159-SUS **2**.
- AS parts set (below) for installing to aluminium frame also available.

[Remarks]

- Be sure to read the "Cautions" **3**.
- Max. temperature: 80°C
- The counter plate should be in contact with the body. Direct contact with the magnet may break the magnet.
- Only MC-158 is marked with "S" to differentiate it from MC-159 (see the drawing below)

[Recommended Screws]

- Countersunk head screw M3 or Countersunk head wood screw 3.1



*Without the mark "PAT.P" from the next production lot.

[Magnetic Catch]

RoHS	CAD	Item Code	Item Name	Magnetic Force N	Magnetic Force kgf	Weight (g)	Box (pcs)	Carton (pcs)
		140-050-014	MC-158	14.7	1.5	12	200	1000
		140-058-061	MC-159	39	4		200	1000
		140-038-023	MC-159-BL				200	1000

Refer to **1** **2** : P.444, **3** : P.431

[Counter Plate] Sold Separately

RoHS	CAD	Item Code	Item Name
		140-059-555	MC-YN001U
		140-038-025	MC-YN001U-BL



Parts Set for Installing to Aluminium Frame

Please refer to the series introduction page **1** for details about AS series.

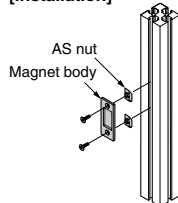


[AS Parts Set] Parts set of counter plate, screws and AS nuts used for installing to aluminium frame

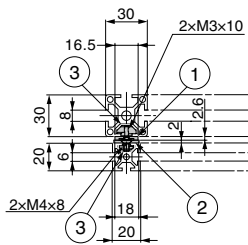
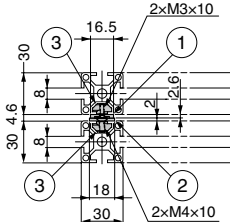
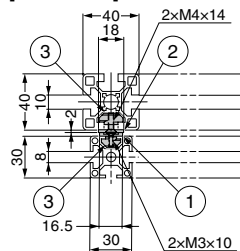
RoHS	CAD	Item Code	Item Name	Aluminium Frame	Parts	Weight (g)
	-	140-041-498	AS-MC-159-30-6	30×30 Groove Width 6 mm	Magnetic Catch MC-159 : 1 pc Counter Plate AS-68 : 1 pc AS Nut AS-6M3 : 2 pcs AS Nut AS-6M4 : 2 pcs M3×10 Hexagon Socket Countersunk Head Screw : 2 pcs M4×10 Hexagon Socket Countersunk Head Screw : 2 pcs	36
	-	140-041-499	AS-MC-159-30-8	30×30 Groove Width 8 mm	Magnetic Catch MC-159 : 1 pc Counter Plate AS-68 : 1 pc AS Nut AS-8M3 : 2 pcs AS Nut AS-8M4 : 2 pcs	44
	-	140-041-500	AS-MC-159-40-8	40×40 Groove Width 8 mm	AS Nut AS-8M4 : 2 pcs M3×10 Hexagon Socket Countersunk Head Screw : 2 pcs M4×10 Hexagon Socket Countersunk Head Screw : 2 pcs	48

*Item names correspond to MC-159.

[Installation]



[Dimensions]



No.	Product Name
①	Magnetic Catch MC-159
②	Counter Plate AS-68
③	AS Nut

Refer to **1** : P.20, **2** : P.464, **3** : P.526