

SEALED MAGNETIC CATCH MC-MS45



- The body covered with silicon rubber reduces the noise when the door closed.
- Small body with strong magnetic force by using neodymium magnet.
- Washer fitted in the body fixing hole prevents silicone rubber from tearing when screwed.
- Similar item (larger size and stronger magnetic force): MC-MS50 [1](#).

[Remarks]

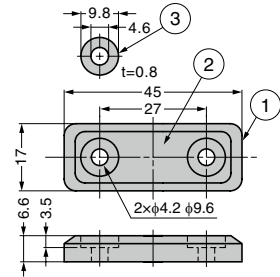
- Be sure to read the "Cautions" [2](#).
- Do not use in strong acid and strong alkaline environment.
- Do not use in contact with steam, hot water and water.
- Max. temperature: 80°C
- Do not scrape strongly, as damaged magnetic surface may tear. Please use flat counter plate without irregularities.

[Sold Separately]

- Counter plate MC-JMP45 [3](#)
- Counter plate AS-68 [4](#), MC-JM49 [5](#)

[Recommended Screws]

- Truss head screw M4



[Body]

RHS	CAD	Item Code	Item Name	Colour	Magnetic Force N	Magnetic Force kgf	Weight (g)	Box (pcs)	Carton (pcs)
G	3D	140-033-799	MC-MS45LGR	Light Grey	19.6	2	12	100	1000
G	3D	140-033-800	MC-MS45DGR	Dark Grey				100	1000

[Counter Plate] Sold Separately

RHS	CAD	Item Code	Item Name	Weight (g)	Box (pcs)	Carton (pcs)
G	3D	140-050-122	MC-JMP45WT	7	100	1000
G	3D	140-029-241	MC-JMP45BL	7	100	1000
G	3D	140-050-138	AS-68	17	100	1000
G	3D	140-050-149	MC-JM49	10	100	1000

Refer to [1](#) : P.446, [2](#) : P.431, [3](#) : P.463, [4](#) [5](#) : P.464

No.	Part Name	Material	Finish / Colour
①	Body	Silicone Rubber (Q)	Light Grey, Dark Grey
②	Magnet	Neodymium	Nickel
③	Washer	Stainless Steel (SUS304)	Plain

SEALED MAGNETIC CATCH MC-MS50



- The body covered with silicon rubber reduces the noise when the door closed.
- Small body with strong magnetic force by using neodymium magnet.
- Washer fitted in the body fixing hole prevents silicone rubber from tearing when screwed.
- Similar item (smaller size and weaker magnetic force): MC-MS45 [1](#).

[Remarks]

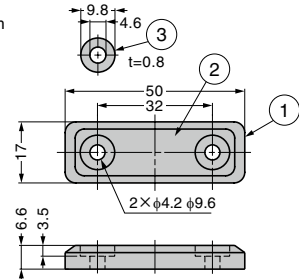
- Be sure to read the "Cautions" [2](#).
- Do not use in strong acid and strong alkaline environment.
- Do not use in contact with steam, hot water and water.
- Max. temperature: 80°C
- Do not scrape strongly, as damaged magnetic surface may tear. Please use flat counter plate without irregularities.
- Recommended tightening torque is 39N · cm (4kgf · cm).

[Sold Separately]

- Counter plate MC-JMP45 [3](#)
- Counter plate AS-68 [4](#), MC-JM49 [5](#)

[Recommended Screws]

- Truss screw M4



[Body]

RHS	CAD	Item Code	Item Name	Colour	Magnetic Force N	Magnetic Force kgf	Weight (g)	Box (pcs)	Carton (pcs)
G	3D	140-024-468	MC-MS50LGR	Light Grey	39.2	4	15	100	1000
G	3D	140-024-469	MC-MS50DGR	Dark Grey				100	1000

[Counter Plate] Sold Separately

RHS	CAD	Item Code	Item Name	Weight (g)	Box (pcs)	Carton (pcs)
G	3D	140-050-122	MC-JMP45WT	7	100	1000
G	3D	140-029-241	MC-JMP45BL	8	100	1000
G	3D	140-050-138	AS-68	17	100	1000
G	3D	140-050-149	MC-JM49	10	100	1000

Refer to [1](#) : P.446, [2](#) : P.431, [3](#) : P.463, [4](#) [5](#) : P.464

No.	Part Name	Material	Finish / Colour
①	Body	Silicone Rubber (Q)	Light Grey, Dark Grey
②	Magnet	Neodymium	Nickel
③	Washer	Stainless Steel (SUS304)	Plain