

SEALED MAGNETIC CATCH MC-MSH Food Sanitation Act Compliant Material



- Body material is compliant with the Food Sanitation Act (standard test for rubber implement (except baby bottles), containers and packaging).
- Blue body is easy to find even if it is mixed in food and other parts can also be detected with a metal detector.
- The body covered with silicon rubber reduces the noise when the door closed.
- Small body with strong magnetic force by using neodymium magnet.
- Washer fitted in the body fixing hole prevents silicone rubber from tearing when screwed.

[Remarks]

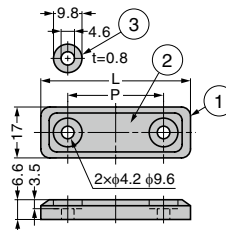
- Be sure to read the "Cautions" 1.
- Do not use in strong acid and strong alkaline environment.
- Do not use in contact with steam, hot water and water.
- Max. temperature: 80°C
- Do not scrape strongly, as damaged magnetic surface may tear. Please use flat counter plate without irregularities.

[Sold Separately]

- Counter plate AS-68 2, MC-JM49 3

[Recommended Screws]

- Truss screw M4



[Body]

RoHS	CAD	Item Code	Item Name	L	P	Magnetic Force N	Magnetic Force kgf	Weight (g)	Box (pcs)	Carton (pcs)
CE	3D	140-033-801	MC-MSH45BU	45	27	19.6	2	12	100	1000
CE	3D	140-033-802	MC-MSH50BU	50	32	39.2	4	15	100	1000

[Counter Plate] Sold Separately

RoHS	CAD	Item Code	Item Name	Weight (g)	Box (pcs)	Carton (pcs)
CE	3D	140-050-138	AS-68	17	100	1000
CE	3D	140-050-149	MC-JM49	10	100	1000

Refer to 1 : P.431, 2 3 : P.464

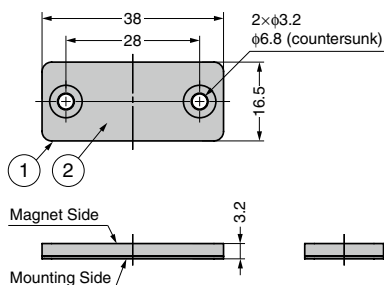
No.	Part Name	Material	Finish / Colour
①	Body	Silicone Rubber (Q)	Blue
②	Magnet	Neodymium	Nickel
③	Washer	Stainless Steel (SUS304)	Plain

SEALED MAGNETIC CATCH MC-JM38 Ultra-thin



MC-JM38WT

MC-JM38BL



- Covered with resin to prevent from rusting.
- Made of neodymium for strong magnetic force.
- The thickness is only 3.2 mm.
- Ideal for clean room, wet condition. It is recommended to use with the MC-JMP45 sealed counter plate. 1

[Application]

- Washing machine, kitchen equipment.

[Sold Separately]

- MC-JMP45 sealed counter plate

[Recommended Screw]

- Countersunk screw M3

[Remarks]

- Max. temperature: 80°C
- Recommended tightening torque: Max. 31.5 N·cm (3.2 kgf·cm)

No.	Part Name	Material	Finish/Colour
①	Body	Polypropylene	White, Black
②	Magnet	Neodymium	Nickel

[Counter Plate] Sold Separately

RoHS	CAD	Item Code	Item Name
CE	3D	140-050-122	MC-JMP45WT
CE	3D	140-029-241	MC-JMP45BL

[Magnetic Catch]

RoHS	CAD	Item Code	Item Name	Colour	Magnetic Force N	Magnetic Force kgf	Weight (g)	Box (pcs)	Carton (pcs)
CE	3D	140-050-608	MC-JM38WT	White	14.7	1.5	5	200	1,000
CE	3D	140-050-609	MC-JM38BL	Black				200	1,000

Refer to 1 : P.463