

MAGNETIC CATCH (W/SWITCH) SMC



- Reed switch built-in magnetic catch.
- AS parts set **1** for installing to aluminium frame also available.

[Remarks]

- For the installation that the surface marked with ※ on the drawing below does not contact the magnetic body, install the back plate (included) or the equivalent magnetic body on the surface marked with ※.
- Avoid strong impact to protect the reed switch.
- Do not use or store in a strong magnetic field.
- Make sure that no magnetic body (powder) or adhesive matter adhere to the magnetic surface of the product.
- During use, ensure that the magnetic surface of the body will not project from the counter plate. Otherwise, it may not operate properly.
- When using a counter plate other than the supplied one, please contact local representatives.

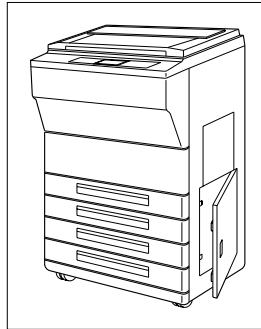
[Parts Included]

- Counter plate, back plate

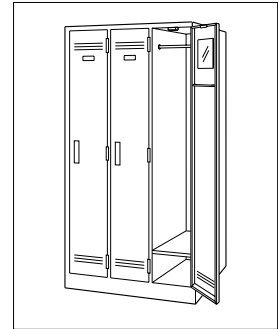
[Properties]

Max. Wattage	10W
Max. Switching Voltage	100V DC
Max. Switching Current	0.5A DC
Max. Contact Resistance	0.15Ω ※ ¹
Operating Temperature	0 ~ 60°C
Lead Wire	UL3385 AWG #26/Black
Tensile Strength of Lead Wire	Min. 1kgf

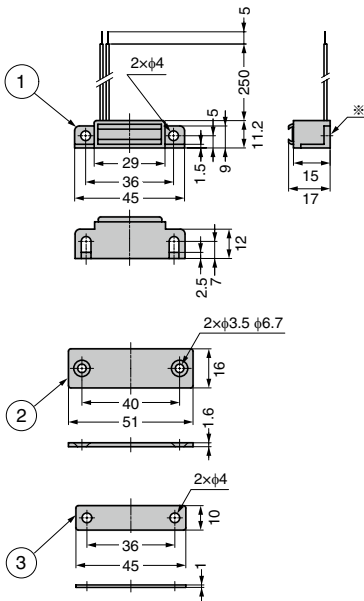
※¹: Lead wire conductor resistance excluded.



Copying machine



Locker



No.	Part Name	Material	Finish / Colour
①	Body	PC	Black
②	Counter plate	Steel (SPCC)	Nickel
③	Back Plate		

※² Switch type A: Switch is OFF when the counter plate and magnet are in contact.

Switch type B: Switch is ON when the counter plate and magnet are in contact.

※³ Measured with a weigh installed to the counter plate of 29 × 16 × 1.6mm (steel).

RHS	CAD	Item Code	Item Name	Switch Type ※ ²	Magnetic Force N ※ ³	Magnetic Force kgf ※ ³	Weight (g)	Box (pcs)	Carton (pcs)
		140-059-416	SMC-101B	B	Min. 9.8	Min. 1	28	50	200
		140-059-417	SMC-103A	A	Min. 29.4	Min. 3		50	200
		140-059-418	SMC-103B	B				50	200

Refer to **1** : P.455