

NON-MAGNETIC TOUCH LATCH **MC-28**

- No handle needed, just push to open/close.
- Lightly push to open the door. When closing, arm will catch the counter plate and hold the door by lightly pushing, too.

[Specifications]

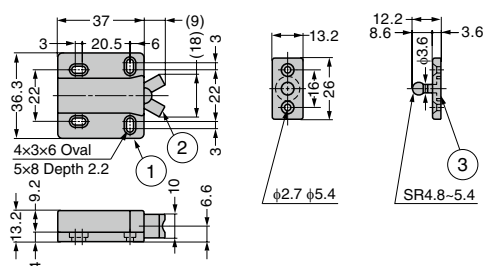
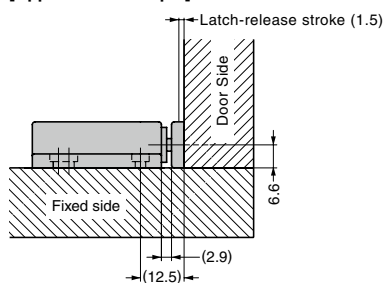
- Passed 30,000 open/close private cycle test

[Remarks]

- For overlay door, make a 3mm gap between door and cabinet frame.

[Parts Included]

- Pan head wood screw 2.7×13
- Countersunk head wood screw 2.4×10

[Application Example]

No.	Part Name	Material	Colour
①	Body	ABS	Black
②	Arm	POM	
③	Counter Plate	PA	

RohS	CAD	Item Code	Item Name	Retaining Force N	Retaining Force kgf	Weight (g)	Box (pcs)	Carton (pcs)
✔	✔	140-059-203	MC-28	29	3	15	50	500

NON-MAGNETIC TOUCH LATCH **ESN-195/BLK** Snap-in Installation

- Compact design with strong retaining force.
- Snap-in type body.
- No handle needed, just push to open/close.
- Lightly push to open the door. When closing, arm will catch the counter plate (sold separately) and hold the door by lightly pushing, too.

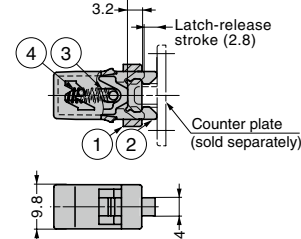
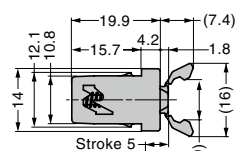
[Sold Separately]

- Counter plate ESN-195-ST

[Recommended Screws]

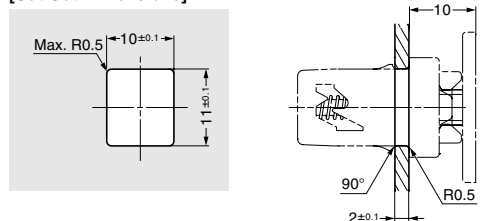
For counter plate (sold separately)

- Countersunk head screw M2.5
- Countersunk head wood screw nominal 2.4



ESN-195-ST (sold separately)

ESN-195/BLK

[Cut Out Dimensions]**[Body]**

RohS	CAD	Item Code	Item Name	Retaining Force N	Retaining Force kgf	Weight (g)	Box (pcs)	Carton (pcs)
✔	✔	140-059-195	ESN-195/BLK	34	3.5	2.3	1000	5000

[Counter Plate] Sold Separately

RohS	CAD	Item Code	Item Name	Material	Colour	Weight (g)	Box (pcs)	Carton (pcs)
✔	✔	140-014-075	ESN-195-ST	POM	Black	1	1000	4000

No.	Part Name	Material	Colour
①	Body	PBT	Black
②	Catch	PA	
③	Arm	LCP	
④	Spring	Steel (SUP)	-