

STAINLESS STEEL DRAW LATCH **SCC-TF30** Clamping Margin AdjustableLOAD
CAPACITY

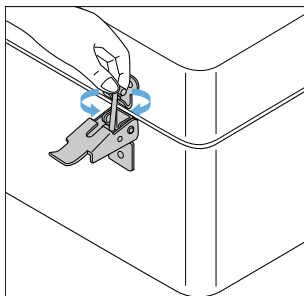
500 N

TEST
METHOD 7

SUS



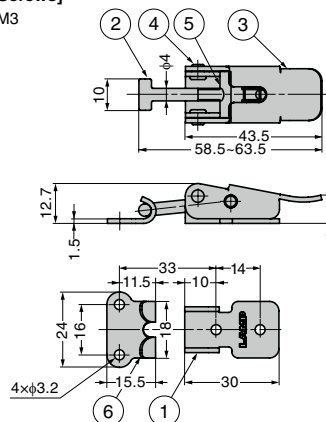
[Adjustment]



- Screw type arm allows for easy clamping margin adjustment after installation.

[Recommended Screws]

- Pan head screw M3



No.	Part Name	Material	Finish
①	Base	Stainless Steel (SUS304)	Barrel Polished
②	Arm	Stainless Steel	—
③	Lever	Stainless Steel (SUS304)	Barrel Polished
④	Shaft	Stainless Steel (SUS303)	Plain
⑤	Adjustment Shaft	Stainless Steel (SUS303)	Plain
⑥	Counter plate	Stainless Steel (SUS304)	Barrel Polished

RoHS	CAD	Item Code	Item Name	Load Capacity N	Load Capacity kgf	Weight (g)	Box (pcs)	Carton (pcs)
		120-028-716	SCC-TF30	500	51	32	100	400

DRAW LATCH (CLEAN ROOM) **STF-CV150** Clamping Margin AdjustableLOAD
CAPACITY

3300 N

SUS316



- Ideal for clean room, semiconductor, and food industry applications.
- No metal-to-metal contact.
- Clamping margin is adjustable.

[Remarks]

- The load capacities in the table below are values when used with a hook sold separately.

[Sold Separately]

- Heavy Duty Counterplate TF40C

[Recommended Screws]

- Countersunk head screw M5

No.	Part Name	Material	Finish / Colour
①	Handle	Stainless Steel (SUS316)/ Cellulose Acetate (CA)	Barrel Polished/White Polished/White
②	Hook	Stainless Steel (SCS14)	Barrel Polished/PA Coating Polished/PA Coating
③	Base	Stainless Steel (SUS316)	Barrel Polished/Polished
④	Hook Screw	Stainless Steel (SCS14)	Barrel Polished/Polished
⑤	Bumper	POM	Natural
⑥	Bush		
⑦	Washer		
⑧	O-ring	CR	Black

※SCS14 is equivalent to SUS316.

[Strike Hook] Sold Separately

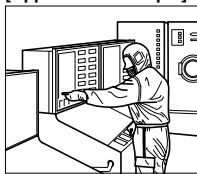
RoHS	CAD	Item Code	Item Name	Finish	Weight (g)	Box (pcs)	Carton (pcs)
		120-014-142	TF40C-ST	Barrel Polished	48	5	20
		120-014-143	TF40C-STM	Polished		5	50

[Body]

RoHS	CAD	Item Code	Item Name	Material	Finish	Load Capacity N	Load Capacity kgf	Weight (g)	Box (pcs)	Carton (pcs)
		120-040-481	STF-CV150	Stainless Steel	Barrel Polished	3300	330	248	5	40
		120-014-141	STF-CV150M	(SUS316)	Polished				5	40

Refer to : P.500

[Application Example]



Clean room equipment, etc.

