



# PUSH LOCK FASTENER 255F, 155F Mini/Button Type

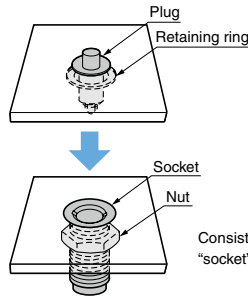
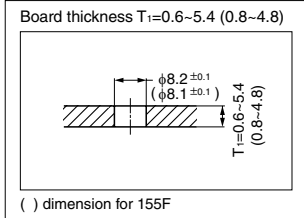


- Insert plug into socket and push to lock/unlock.
- No special tool is required for locking and unlocking.
- Resin and metal types available.
- Fast and easy installation/removal of panel.
- Locked cam prevents release by vibration.
- AS parts set **1** for installing to aluminium frame also available.

**[Remarks]**

- Load applied directly to the body may cause damage.

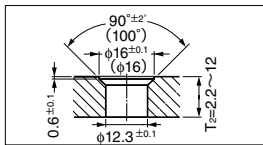
**[Preparation (Plug)]**



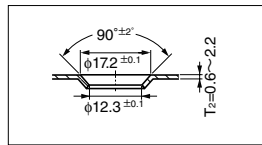
**[Preparation (Socket)]**

**Countersink hole**

Board thickness  $T_2=2.2-12$

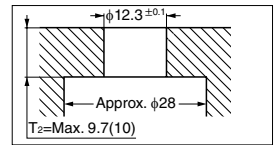
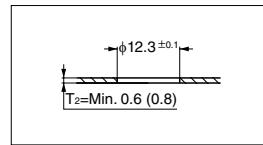


Board thickness  $T_2=0.6-2.2$



**Straight hole**

Board thickness  $T_2=0.6-9.7$  (0.8-10)

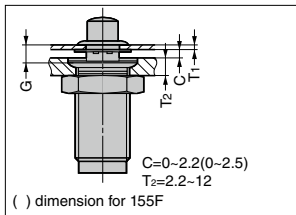


**[Grip Dimensions]**

Please set so that the grip dimension G is within 1.2-6.

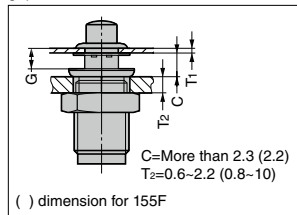
**Countersink hole**

In case of clearance  $C=0-2.2$  (0-2.5), grip dimension  $G=T_1+C+0.7$



**Straight hole**

In case of clearance  $C=2.3$  (2.2) or more, grip dimension  $G=T_1+C-1.4$

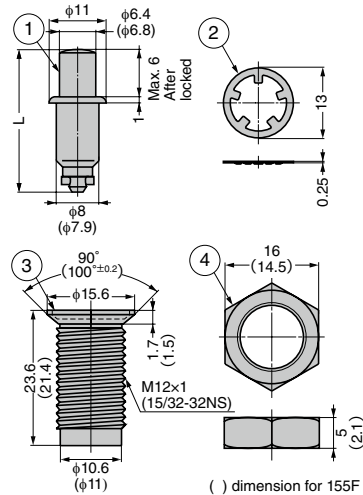


**How to select**

In case of  $T_1=1$ ,  $C=1$  and  $T_2=1$ , grip dimension  $G=1+1+0.7=2.7$   
Set item name...255F-01-3

**How to select**

In case of  $T_1=3$ ,  $C=2.6$  and  $T_2=1$ , grip dimension  $G=3+2.6-1.4=4.2$   
Set item name...155F-03-1



**[255F] Resin type**

R#HS	CAD	Item Code	Set Item Name	Grip Dimension G	Plug Dimension L	Retaining Force N	Retaining Force kgf	Weight (g)	Box (pcs)	Carton (pcs)
3D		120-040-299	255F-01-3	1.2-2.8	23.5	147	15	6	1	1
-	3D	120-040-300	255F-03-3	2.8-4.4	25				1	1
-	3D	120-040-301	255F-05-3	4.4-6	26.5				1	1

No.	Part Name	Material	Finish / Colour
①	Plug	POM	Black
②	Retaining Ring	Steel	Phosphate Coating
③	Socket	POM	Black
④	Nut		

**[155F] Metal type**

R#HS	CAD	Item Code	Set Item Name	Grip Dimension G	Plug Dimension L	Retaining Force N	Retaining Force kgf	Weight (g)	Box (pcs)	Carton (pcs)
-	3D	120-013-715	155F-01-1	1.2-2.8	21.5	147	15	6	-	1
-	3D	120-013-716	155F-03-1	2.8-4.4	23				-	1
-	3D	120-013-717	155F-05-1	4.4-6	24.5				-	1

No.	Part Name	Material	Finish
①	Plug	Brass	Chrome
②	Retaining Ring	Stainless Steel (SUS304)	Passivation
③	Socket	Zinc Alloy (ZDC)	Clear Zinc Chromate
④	Nut	Steel	Chromate

Refer to **1** : P.519