

# 3/4 EXTENSION SLIDE SNS27S

**LOAD CAPACITY** 176~255 N/pair

**L=R** **SUS**



● 3/4 extension (2 members).

**[Remarks]**

● Be sure to read the "Cautions" .

**[Recommended Screws]**

● M4 pan head screw or nominal 4 pan head tapping screw

SOFT-CLOSE SLIDES

PUSH-TO-OPEN SLIDES

MINI SLIDES

MEDIUM SIZE SLIDES (STAINLESS STEEL)

MEDIUM SIZE SLIDES (ALUMINIUM)

MEDIUM SIZE SLIDES (OTHERS)

LINEAR SLIDES

STAINLESS STEEL

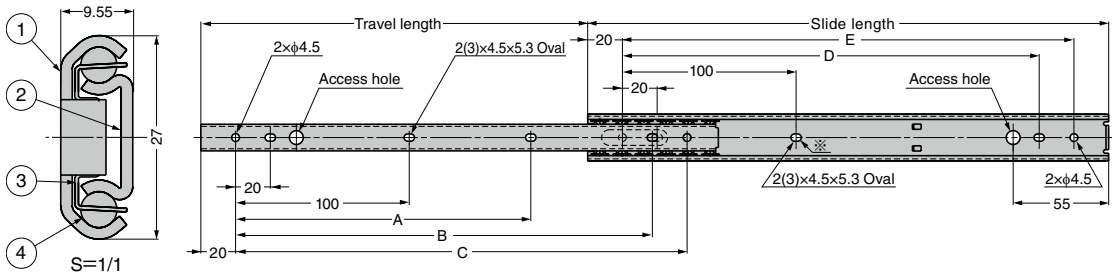
ALUMINIUM

STEEL

When closed



When opened



※The hole cannot be used as a fitting hole for the SNS27S-50

No.	Part Name	Material	Finish
①	Outer Member	Stainless Steel (SUS304)	Plain
②	Inner Member		
③	Retainer		
④	Balls	Stainless Steel (SUS440)	-

Sold by piece.

R#S	CAD	Item Code	Item Name	Slide Length	Travel Length	A	B	C	D	E	Load Capacity N/pair	Load Capacity kgf/pair	Weight (kg/pc)	Box (pcs)	Carton (pcs)
		190-110-177	SNS27S-20	200	135	-	140	160	140	160	255	26	0.17	40	-
		190-110-178	SNS27S-25	250	185	150	190	210	190	210	235	24	0.21	40	-
		190-110-179	SNS27S-30	300	222	190	240	260	240	260			0.25	40	-
		190-110-180	SNS27S-35	350	260	225	290	310	290	310			225	23	0.29
		190-110-181	SNS27S-40	400	297	265	340	360	340	360	206	21	0.33	40	-
		190-110-182	SNS27S-45	450	334	300	390	410	390	410	196	20	0.37	40	-
		190-110-183	SNS27S-50	500	371	337	440	460	440	460	176	18	0.41	40	-

Refer to : P.549