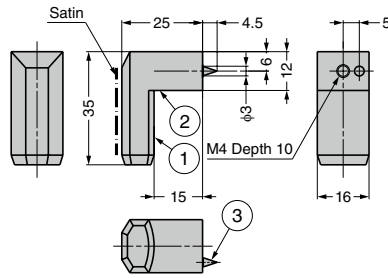


## STAINLESS STEEL KNOB CU-L-35

SUS



● Finish: Combination of polished and satin.

## [Remarks]

● Pin position and size may vary.

## [Parts Included]

● Truss head screw M4×25 (SUS)

No.	Part Name	Material	Finish
①	Body 1	Stainless Steel (SUS303)	Polished and Satin Combination
②	Body 2	Stainless Steel (SUS304)	Polished
③	Pin	Stainless Steel (SUS303)	

RoHS	CAD	Item Code	Item Name	Weight (g)	Box (pcs)	Carton (pcs)
		100-012-824	CU-L-35	60	10	—

LARGE HANDLES

HANDLES (FRONT SCREW MOUNT)

HANDLES (BACK SCREW MOUNT)

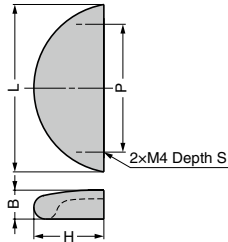
RECESSED PULLS

PULLS &amp; KNOBS

LATCH HANDLES

## STAINLESS STEEL PULL RD

SUS316



● Easy to grasp.

## [Parts Included]

● Truss head screw M4×25 (SUS)

RoHS	CAD	Item Code	Item Name	Material	Finish	L	H	B	P	S	Weight (g)	Box (pcs)	Carton (pcs)
		100-901-049	RD-55SM	Stainless Steel (SCS14)	Polished	55	23	9.5	42	8	50	30	360
		100-901-050	RD-90SM			90	25.5	10.5	74	10	80	20	240

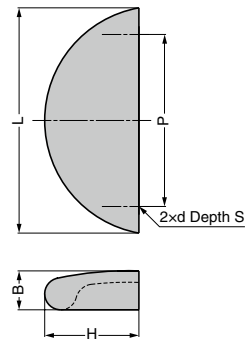
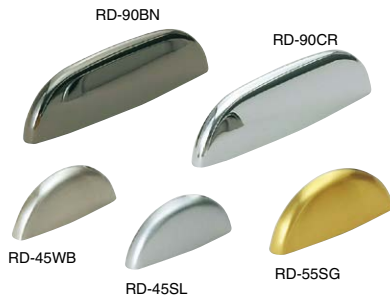
\*SCS14 is equivalent to SUS316.

## PULL RD

● Easy to grasp.

## [Parts Included]

● Truss head screw



RoHS	CAD	Item Code	Item Name	Material	Finish	L	P	H	B	d	S	Weight (g)	Screw	Box (pcs)	Carton (pcs)								
		100-012-331	RD-45CR	Zinc Alloy (ZDC)	Chrome	45	32	19	8.2	M3	7	22	M3×28	40	480								
		100-012-333	RD-45WB		White Bronze Plating									40	480								
		100-012-330	RD-45BN		Black Nickel									40	480								
		100-012-332	RD-45SG		Gold									40	480								
		100-012-387	RD-45SL		Paint/Silver									40	480								
		100-012-335	RD-55CR		Chrome									55	42	23	9.5	M4	8	35	M4×28	30	360
		100-012-337	RD-55WB		White Bronze Plating	30	360																
		100-012-334	RD-55BN		Black Nickel	30	360																
		100-012-336	RD-55SG		Gold	30	360																
—		100-012-162	RD-90CR		Chrome	90	74	25.5	10.5	M4	9.5	63	M4×28									20	240
		100-012-341	RD-90WB		White Bronze Plating																	20	240
		100-012-338	RD-90BN		Black Nickel									20	240								
		100-012-340	RD-90SG	Gold	20									240									