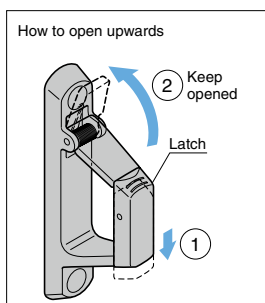


## LATCH HOOK EN-E107

TEST  
METHOD 4

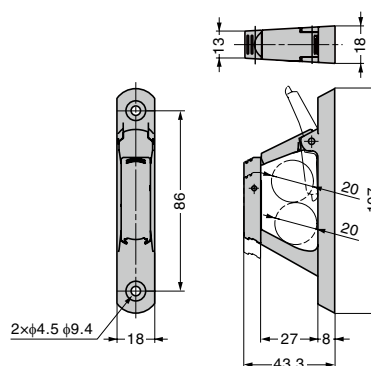
SUS316



- One push release for wide opening.
- Hook is spring loaded to retract, preventing hooked items from falling off.
- Up to two chains or ropes (up to  $\phi 20$  in diameter) can be hung.
- Suitable for exterior use. (e.g. marine, housing, shops and leashes for pets).
- Slim design allows installing to door or window frame.

## [Parts Included]

- Countersunk head tapping screw 4×25 (SUS)



RHS	CAD	Item Code	Item Name	Material	Finish	Applicable Rope Dia.	Load Capacity N	Load Capacity kgf	Weight (g)	Box (pcs)	Carton (pcs)
G	3D	110-028-722	EN-E107	Stainless Steel (SCS14)	Polished	$\phi 20 \times 2$	392	40	131	10	60

※SCS14 is equivalent to SUS316.

## LATCH HOOK EN-K

NSF

TEST  
METHOD 4

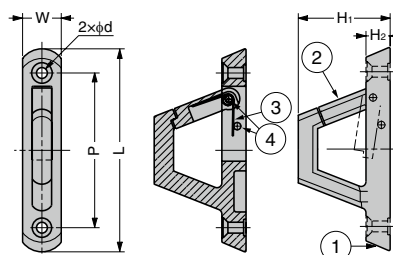
SUS316



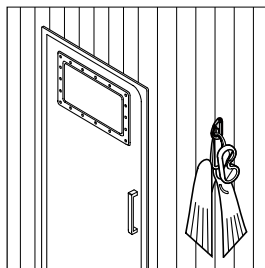
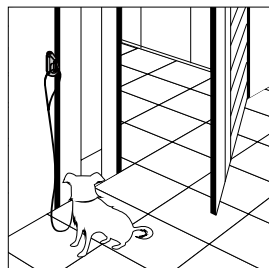
- Hook is spring loaded to retract, preventing hooked items from falling off.
- Chain or rope up to  $\phi 10$  (for EN-K84) or  $\phi 20$  (for EN-K120) can be hung.
- Suitable for exterior use. (e.g. marine, housing, shops and leashes for pets)
- Slim design allows installing to door or window frame.

## [Parts Included]

- EN-K84: Countersunk head tapping screw 4×25
- EN-K120: Countersunk head tapping screw 5×30



## [Application Example]



No.	Part Name	Material	Finish
①	Body	Stainless Steel (SCS14)	Polished
②	Arm	Stainless Steel (SUS316)	Plain
③	Spring	Stainless Steel (SUS316)	Plain
④	Shaft	Stainless Steel (SUS316)	Plain

※SCS14 is equivalent to SUS316.

RHS	CAD	Item Code	Item Name	L	P	H <sub>1</sub>	H <sub>2</sub>	W	d	Applicable Rope Dia.	Load Capacity N	Load Capacity kgf	Weight (g)	Box (pcs)	Carton (pcs)
G	3D	110-020-026	EN-K84	84	64	38	10	16	$\phi 4.5 \phi 8.5$	Max. $\phi 10$	196	20	92	10	120
G	3D	110-010-109	EN-K120	120	96	54	12	22	$\phi 5.4 \phi 10.5$	Max. $\phi 20$	588	60	280	10	60