

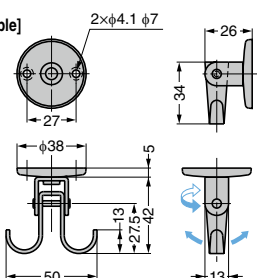
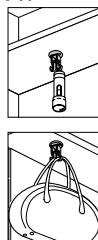
ROTATING SWING HOOK RF-U50

TEST
METHOD 4 SUS

Ceiling mount



[Application Example]



- Rotates 360° and swings 180°.
- Possible to install in various places like ceiling and wall.

[Parts Included]

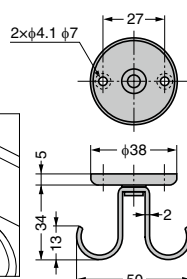
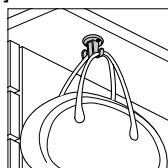
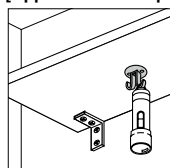
- Raised countersunk head tapping screw 3×25 (SUS)

RECESSED
HOOKSLATCH
HOOKSSWING
HOOKSSMALL
HOOKSLARGE
HOOKSPANEL
HANGERBRACKETS
&
SHELVING
SYSTEMS

ROTATING HOOK RF-50S

TEST
METHOD 4 SUS

[Application Example]



- Rotates 360°.

[Parts Included]

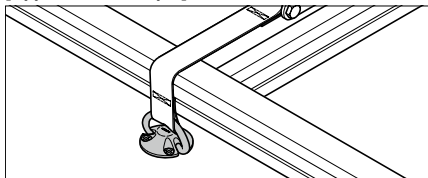
- Raised Countersunk head tapping screw (conical tip) 3×25 (SUS)

RoHS	CAD	Item Code	Item Name	Material	Finish	Load Capacity N/hook	Load Capacity kgf/hook	Weight (g)	Box (pcs)	Carton (pcs)
		110-020-082	RF-50S	Stainless Steel (SUS304)	Satin	40	4	33	25	500

HEAVY DUTY FOLDING PAD EYE EY-R

TEST
METHOD 2 SUS316

[Application Example]



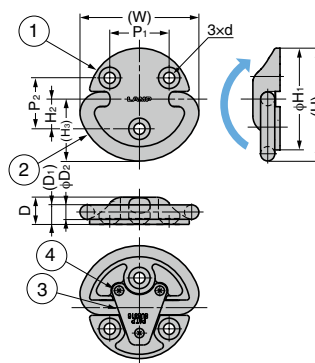
- Arm can be folded for safety.
- Friction function prevents the arm from sounding caused by vibration.
- Arm is made of special stainless steel with high strength.
(Corrosion resistance is equivalent to SUS 304)
- Buffering effect of body protects the mounting surface from scratches.

[Applications]

- Marine furniture or offshore facilities, etc.

[Parts Included]

- EY-R50:
Hexagon socket countersunk head screw M5×16 (SUS)
- EY-R60:
Hexagon socket countersunk head screw M6×16 (SUS)
- EY-R80:
Hexagon socket countersunk head screw M8×16 (SUS)



No.	Part Name	Material	Finish
①	Body	Stainless Steel (SCS14)	Barrel
②	Arm	Stainless Steel	Polished
③	Back Plate	Stainless Steel (SUS304-CSP)	Plain
④	Pan Head Tapping Screw M3×5	Stainless Steel (SUS316)	—

※SCS14 is equivalent to SUS316.

RoHS	CAD	Item Code	Item Name	W	H	H ₁	H ₂	H ₃	D	D ₁	D ₂	P ₁	P ₂	d	Load Capacity N	Load Capacity kgf	Weight (g)	Box (pcs)	Carton (pcs)
		110-012-542	EY-R50	61.4	56.5	48	13	32.5	14.5	10.5	7.9	28	24	φ5.5 φ10.4	4900	500	116	10	120
		110-012-543	EY-R60	75.5	69.5	60	17.5	39.5	16	11.5	8.9	35	30	φ6.6 φ12.6	7840	800	202	10	60
		110-012-544	EY-R80	101.3	92.5	80	23	52.5	19	14	11.4	45	40	φ9 φ17.3	11760	1200	431	5	30