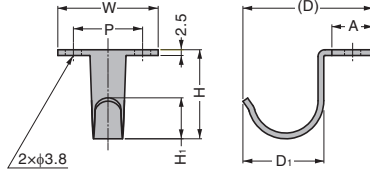


HOOK HJU

SUS



- Wide Hook allows for easy hanging.
- Can be installed from above or below.

[Parts Included]

- Truss head tapping screw 3.5×20 (SUS)

RoHS	CAD	Item Code	Item Name	Material	Finish	W	P	H	H ₁	A	D	D ₁	Load Capacity N	Load Capacity kgf	Weight (g)	Box (pcs)	Carton (pcs)
CE	3D	110-017-524	HJU-30S	Stainless Steel (SUS304)	Satin	32.5	20	25	13	13	41.8	25.5	98	10	15	30	600
CE	3D	110-017-525	HJU-50S			43	30	38	18	18	59	37.5			30	40	800

HOOK HJ

NSF

TEST
METHOD 4

SUS



- Black colour (matte) is newly launched.

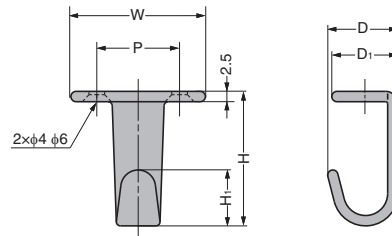
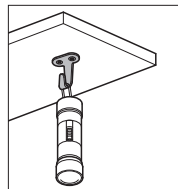
[Remarks]

- Noted that scratch is conspicuous on black surface.

[Parts Included]

- HJ-20S: Raised countersunk head wood head screw 3.1×16 (SUS)
- HJ-30S, HJ50S: Raised countersunk head wood head screw 3.5×16 (SUS)

[Application Example]



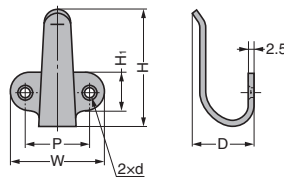
RoHS	CAD	Item Code	Item Name	Material	Finish / Colour	W	P	H	H ₁	D	D ₁	Load Capacity N	Load Capacity kgf	Weight (g)	Box (pcs)	Carton (pcs)				
CE	3D	110-020-029	HJ-20S	Stainless Steel (SUS304)	Satin	28	18	27	11	13	140	14	11	120	1200					
CE	3D	110-028-963	HJ-20SBL		Paint/Black									60	600					
CE	3D	110-020-078	HJ-30S		Satin	32.5	20	33	13.5	16				15	30	360				
CE	3D	110-028-964	HJ-30SBL		Paint/Black												30	360		
CE	3D	110-020-079	HJ-50S		Satin	43	30	47	19.6	22							21	30	40	800
CE	3D	110-028-965	HJ-50SBL		Paint/Black															

HOOK 2H

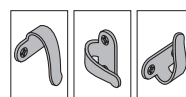
NSF

TEST
METHOD 4

SUS



[Application Example]



[Parts Included]

- 2H-20S: Raised countersunk head wood head screw 3.1×16 (SUS)
- 2H-30S, SH-40S, 2H50S: Raised countersunk head wood head screw 3.5×16 (SUS)

RoHS	CAD	Item Code	Item Name	Material	Finish	W	P	H	H ₁	D	d	Load Capacity N	Load Capacity kgf	Weight (g)	Box (pcs)	Carton (pcs)
CE	3D	110-010-142	2H-20S	Stainless Steel (SUS304)	Satin	28	18	30	10	18	φ4 φ6.2	98	10	13	120	1200
CE	3D	110-010-143	2H-30S			32.5	20	39	13					18	1000	
CE	3D	110-010-144	2H-40S			35	21.5	44	16	23	φ4 φ7	60	6	23	80	800
CE	3D	110-010-145	2H-50S			43	30	56	18	26				34	50	500