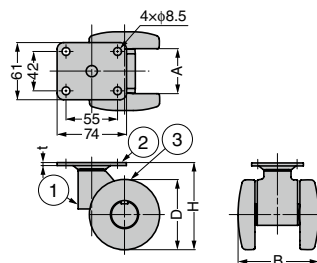


PARTS SEPARABLE CASTER **CNP** Plate Type

LOAD CAPACITY 588 N,1176 N **SUS**



● Non-levelling glide type of caster CAP 1



No.	Part Name	Material	Finish/Colour
①	Body	PA	Black (B)/White (W)
②	Plate	Steel	Coloured Zinc Chromate
		Stainless Steel (SUS304)	Plain
③	Wheel	PA	Black (B)/White (W)

RoHS	CAD	Item Code	Item Name	Material	Finish/Colour	D	H	A	B	t	Load Capacity N/pc	Load Capacity kgf/pc	Weight (g)	Box (pcs)	Carton (pcs)
☑	3D	200-130-242	CNPF50B	Steel, PA	Coloured Zinc Chromate, Black	50	63	40	70	3.2	588	60	270	40	-
☑	3D	200-130-243	CNPF50W		Coloured Zinc Chromate, White										
☑	3D	200-130-244	CNPF75B		Coloured Zinc Chromate, Black	75	92	50	85						
☑	3D	200-130-245	CNPF75W		Coloured Zinc Chromate, White										
☑	3D	200-130-252	CNPS50W	Stainless Steel,	Plain, White	50	63	40	70	3	588	60	270	40	-
☑	3D	200-130-253	CNPS75W	PA											

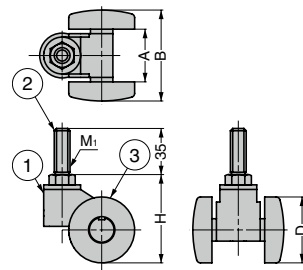
Refer to 1 : P.915

PARTS SEPARABLE CASTER **CNB** Threaded Bolt Type

LOAD CAPACITY 588 N,1176 N **SUS**



● Non-levelling glide type of caster CAP 1



No.	Part Name	Material	Finish/Colour
①	Body	PA	Black (B)/White (W)
②	Threaded Bolt	Steel (SWCH)	Coloured Zinc Chromate (Trivalent)
		Stainless Steel (SUS304)	Plain
③	Wheel	PA	Black (B)/White (W)

RoHS	CAD	Item Code	Item Name	Material	Finish/Colour	D	H	A	B	M ₁	Load Capacity N/pc	Load Capacity kgf/pc	Weight (g)	Box (pcs)	Carton (pcs)
☑	3D	200-130-234	CNBF50B	Steel, PA	Coloured Zinc Chromate, Black	50	67	40	70	M12	588	60	230	40	-
☑	3D	200-130-235	CNBF50W		Coloured Zinc Chromate, White										
☑	3D	200-130-236	CNBF75B		Coloured Zinc Chromate, Black	75	96	50	85						
☑	3D	200-130-237	CNBF75W		Coloured Zinc Chromate, White										
☑	3D	200-130-248	CNBS50W	Stainless Steel,	Plain, White	50	67	40	70	M12	588	60	230	40	-
☑	3D	200-130-249	CNBS75W	PA											

Refer to 1 : P.915