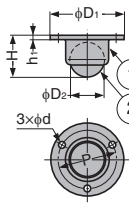


BALL CASTER (SURFACE MOUNT TYPE) BM

LOAD CAPACITY 98~392 N



[Remarks]

- Do not use it on a vertical surface.
- Dimensions in the figure are for reference. Also, steel ball may scratch the floor contact surface. Please confirm the actual item before use.

No.	Part Name	Material	Finish
①	Body	Steel (SPCC)	Brass
②	Ball	Steel (SWCH), Steel (SUJ): BM12 Only	Polished

RoHS	CAD	Item Code	Item Name	D ₁	D ₂	H	P	h ₁	d	Load Capacity N/pc	Load Capacity kgf/pc	Weight (g)	Box (pcs)	Carton (pcs)
☑	3D	200-013-982	BM-12	28.9	11.9	15.2	21.8	1.7	2.5	98	10	17.5	100	800
☑	3D	200-013-983	BM-15	33.7	14.3	19.3	26.6	2.1	2.8	118	12	31.5	8	400
☑	3D	200-133-020	BM-20	37	17.5	23	29.5	3	2.7	147	15	52	8	400
☑	3D	200-133-021	BM-25	44	22.2	27	36	3.2	2.8	245	25	93	4	200
☑	3D	200-133-022	BM-32	57	25.4	32	47	3.2	4.7	392	40	150	4	200

HEAVY DUTY CASTERS

SINGLE WHEEL CASTERS

TWIN WHEEL CASTERS

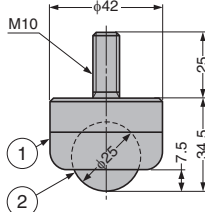
CASTERS WITH LEVELLING GLIDES

BALL CASTERS

SLIDING DOOR ROLLERS

PLASTIC CASTER (THREADED BOLT TYPE) NT

LOAD CAPACITY 245 N



[Remarks]

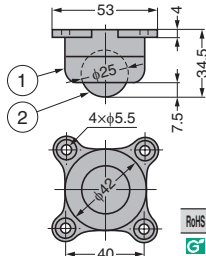
- Inbuilt ball bearing is made of steel.
- The load capacity is static load value.
- Do not use it on a vertical surface. It may cause noise, deformation or damage.

No.	Part Name	Material	Colour
①	Body	PA	Brown
②	Ball	Melamine Resin (MF)	Ivory

RoHS	CAD	Item Code	Item Name	Load Capacity N/pc	Load Capacity kgf/pc	Weight (g)	Box (pcs)	Carton (pcs)
☑	3D	200-133-010	NT-25	245	25	58	20	200

PLASTIC CASTER (SURFACE MOUNT TYPE) NS

LOAD CAPACITY 245 N



[Remarks]

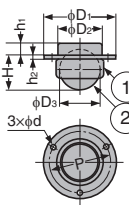
- Inbuilt ball bearing is made of steel.
- The load capacity is static load value.
- Do not use it on a vertical surface. It may cause noise, deformation or damage.

No.	Part Name	Material	Colour
①	Body	PA	Brown
②	Ball	Melamine Resin (MF)	Ivory

RoHS	CAD	Item Code	Item Name	Load Capacity N/pc	Load Capacity kgf/pc	Weight (g)	Box (pcs)	Carton (pcs)
☑	3D	200-130-422	NS-25	245	25	43	20	200

BALL CASTER (RECESSED MOUNT TYPE) BH

LOAD CAPACITY 98~196 N



[Remarks]

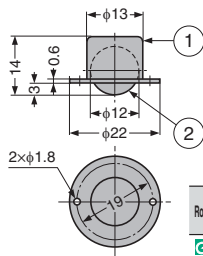
- Do not use it on a vertical surface.
- Dimensions in the figure are for reference. Also, steel ball may scratch the floor contact surface. Please confirm the actual item before use.

No.	Part Name	Material	Colour
①	Body	Steel (SPCC)	Brass
②	Ball	Steel (SWCH)	Polished

RoHS	CAD	Item Code	Item Name	D ₁	D ₂	D ₃	H	P	h ₁	h ₂	d	Load Capacity N/pc	Load Capacity kgf/pc	Weight (g)	Box (pcs)	Carton (pcs)
☑	3D	200-133-030	BH-20	30	18.3	17.5	16	24	5	1.6	2	98	10	35	8	400
☑	3D	200-133-031	BH-25	41	24.7	22.2	19.5	36	6	2.3	2.6	147	15	73	4	200
☑	3D	200-133-032	BH-32	48	29.3	25.4	24.5	41	6	2.3	2.6	196	20	113	4	200

MINI BALL CASTER (RECESSED MOUNT TYPE) BHB-12

LOAD CAPACITY 78.4 N



[Remarks]

- Do not use it on a vertical surface.
- Dimensions in the figure are for reference. Also, steel ball may scratch the floor contact surface. Please confirm the actual item before use.

No.	Part Name	Material	Finish
①	Body	Steel (SPCC)	Clear Zinc Chromate (Trivalent)
②	Ball	Steel (SUJ)	Polished

RoHS	CAD	Item Code	Item Name	Load Capacity N/pc	Load Capacity kgf/pc	Weight (g)	Box (pcs)	Carton (pcs)
☑	3D	200-133-040	BHB-12	78.4	8	11	100	2000